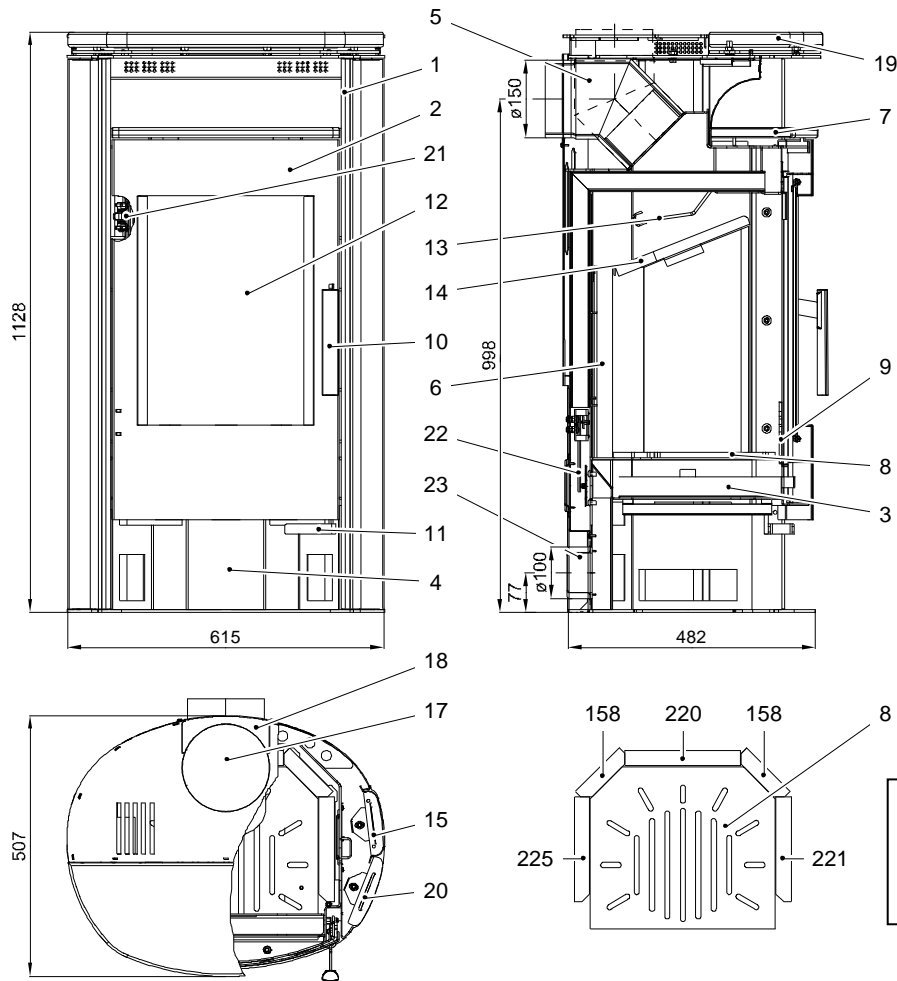




Equipment sheet Rondo



Suitable fuels:

As concerns suitable fuel to be employed, see the chapter **2.2 Fuel** in the General Manual of Operation.

Proper operation:

As concerns the proper and safe operation of the fireplace stove, see the chapters **2. Description of the combustion process** and **5. Operating instructions** in the General Manual of Operation.

0050102200005	220	370x240x30
0050102210005	221	450x204x30
0050102250005	225	450x204x30
0050101580005	158	370x120x30

Fuels	Maximum fuel quantity	Primary air damper (11) (Air flow through the grating)	Secondary air damper (22)
Wood billets	2 – 3 billets (approx. 2 – 2,5 kg)	For 10 minutes: Open, then closed	Automatic

Spare part no.	Item	Name	Spare part no.	Item	Name
-	1	Oven body	0050500620005	14	Lower draft deflection plate 400x275
0424917205300	2	Fire chamber door/antracit	0424917005101	15	Side parts steel
0427717005600	3	Ash pan	0421817005001	17	Insert plate
-	4	Wood storage compartment	0424917205060	18	Insert plate rear
0425515025002	5	Smoke pipe spigot	0424918010100	19	Cover plate/Serpentino
-	6	Refractory	0424918020100	19	Cover plate/Paradiso
-	7	Oven	0424918010200	20	Side parts/Serpentino
0424917205020	8	Base support framework	0424918020200	20	Side parts/Paradiso
0424917006500	9	Upright grating	0088400230005	21	Door spring
0425317035302	10	Fire chamber door handle	-	22	Secondary air damper - Automatic
-	11	Primary air damper	0088500050008	23	Outside air - pipe fitting Ø 100
0424917205304	12	Glass pane curved 480x340	0040014140005	-	Seal door 14 mm (2450 mm)
0424917006502	13	Upper draft deflection plate	0040210040005	-	Seal glass 10x4 mm (1600 mm)

Technical data:		Rondo	
Height	1128 mm	Flue gas temperature on the spigot of the heat generator	290 °C
Width	615 mm	Minimum delivery pressure	12 Pa
Depth without handles	507 mm	Minimum delivery pressure with 0.8 times rated thermal capacity	10 Pa
Weight	187 kg	Flue mass flow	7,5 g/s
Pipe spigot	150 mm	Fuel	Wood
Rated heating capacity	8 kW	CO ₂	9,4 %
Thermal output range	3,6 – 8,6 kW	Energy efficiency	80,7 %
Inspection no. EN 13240			