

HAAS
+
SOHN

Treviso II

Equipment sheet
Fireplace stove

GB

0433900001400e

Introduction

We thank you very much for purchasing our product!

The description of the heating device will inform you in detail about the design, technical specification and operation of the heating device. We recommend you to acquaint yourselves closely with these data. In this way, you will avoid possible faults during the proper assembly and operation.

You will find detailed conditions of installation and operation in General Manual of Operation (included in the scope of the delivery).

Notes in the text

GB



Of utmost importance there are the notes entitled **WARNING**. The notes entitled **WARNING** advise you on **serious danger of damage to the heating device or of an injury**.



The note entitled **Notice** advises you on possible damage to your heating device.



The note entitled **Important** calls your attention to the information important for the operation of your heating device.



The note itself calls your attention to the information important for the operation of your heating device in general.

Contents

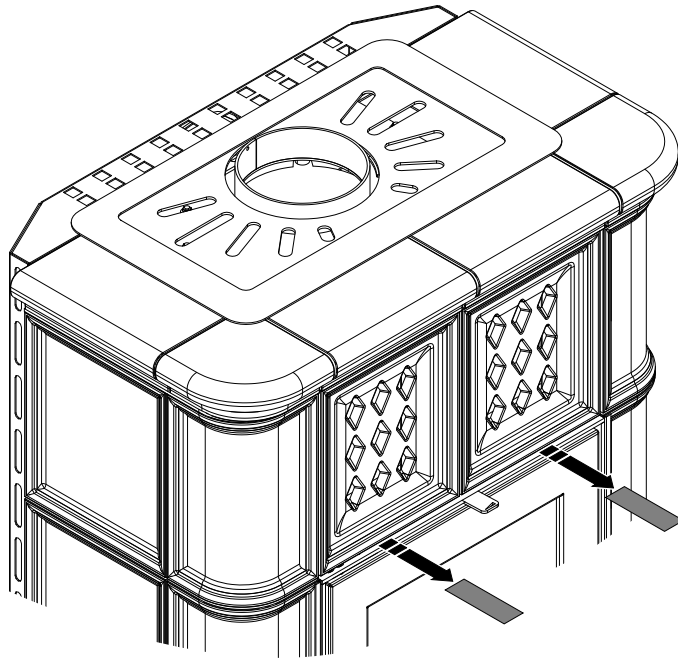
1. Technical data	1
2. Technical description	2
3. List of spare parts	3
3.1. Overall scheme of the model	3
3.2. Detail A1	5
4. Dimensioned diagram	6
5. Installation of flue elbow	7
6. Cracks in the glazing layer	8
7. Heat-conducting exchanger assembly	9
8. Removal of heat-conducting exchanger	17



WARNING

Prepare before putting into operation

Spacers located at the front side of the stove (see the figure) must be removed before putting the stove into operation!



1. Technical data



Suitable fuel:

As concerns suitable fuel to be employed, see the chapter **2.2 Fuel** in the General Manual of Operation.

Proper operation:

As concerns the proper and safe operation of the fireplace stove, see the chapters **2. Description of the combustion process** and **5. Operating instructions** in the General Manual of Operation.

Instructions for the control of combustion process

Fuel		Output of the heating device	Amount of fuel	Primary air	Secondary air	Tertiary air
Blockwood		100%	2,3 kg/h	open 5%	open 70%	non-controllable
Blockwood		33%	0,8 kg/h	open 5%	open 30%	non-controllable
Coal briquettes		100%	1,7 kg/h	open 50%	open 50%	non-controllable
Coal briquettes		33%	0,6 kg/h	open 30%	open 30%	non-controllable

Technical data

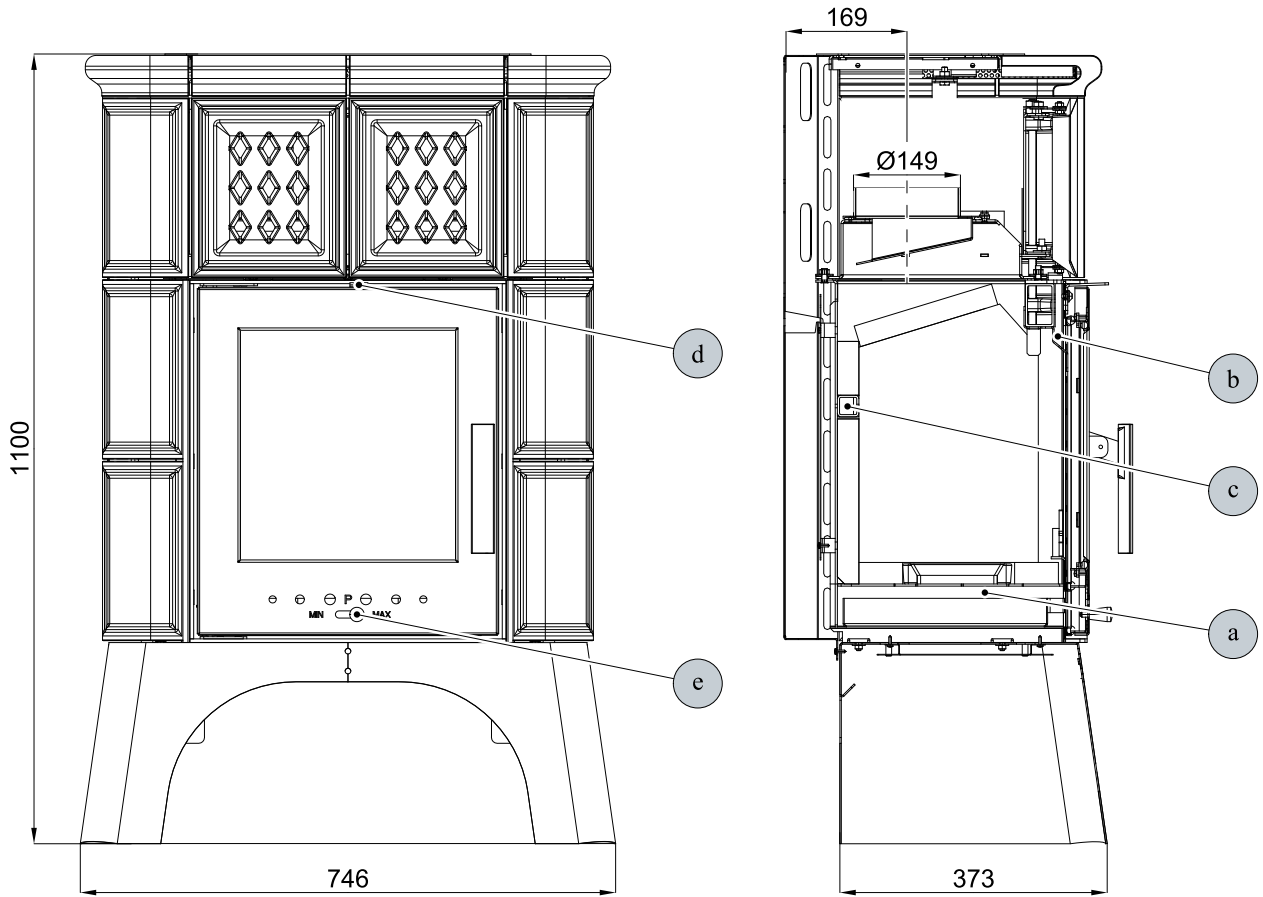
	Blockwood	Coal briquettes
Achieved heat output (100%)	8,2 kW	8,2 kW
Nominal heat output	8 kW	8 kW
Reduced heat output (33%)	2,7 kW	2,7 kW
Maximum stoking amount of the fuel	2,3 kg/h	1,7 kg/h
Average temperature of combustion products behind the smoke flue neck	349 °C	345 °C
Maximum mass flow of dry combustion products	5,6 g/s	4,9 g/s
Energy efficiency	80,5 %	82,2 %
Average concentration of CO ₂	12 %	12,4 %
Concentration of CO in combustion products at 13% O ₂	987 mg/Nm ³	827 mg/Nm ³
Average concentration of dust at 13% O ₂	34 mg/Nm ³	35 mg/Nm ³
The amount of combustion air at nominal output	15 m ³ /h	—
Tested in compliance with EN 13 240:2001/A2:2004		

Technical information

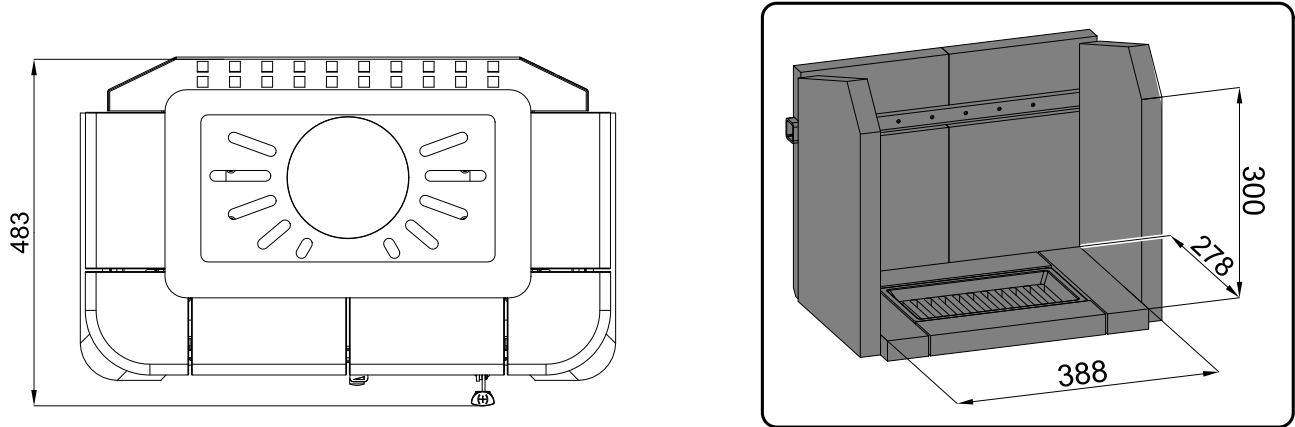
Height	1100 mm
Width	746 mm
Depth	483 mm
Weight	142 kg
Diameter of the smoke flue	150 mm
Min. chimney stack draught in the smoke flue neck	12 Pa
Heating capacity (middle heat losses) at 8,2 kW	cca 148 m ³
Controllable output	2,7 – 8,2 kW

2. Technical description

Technical description



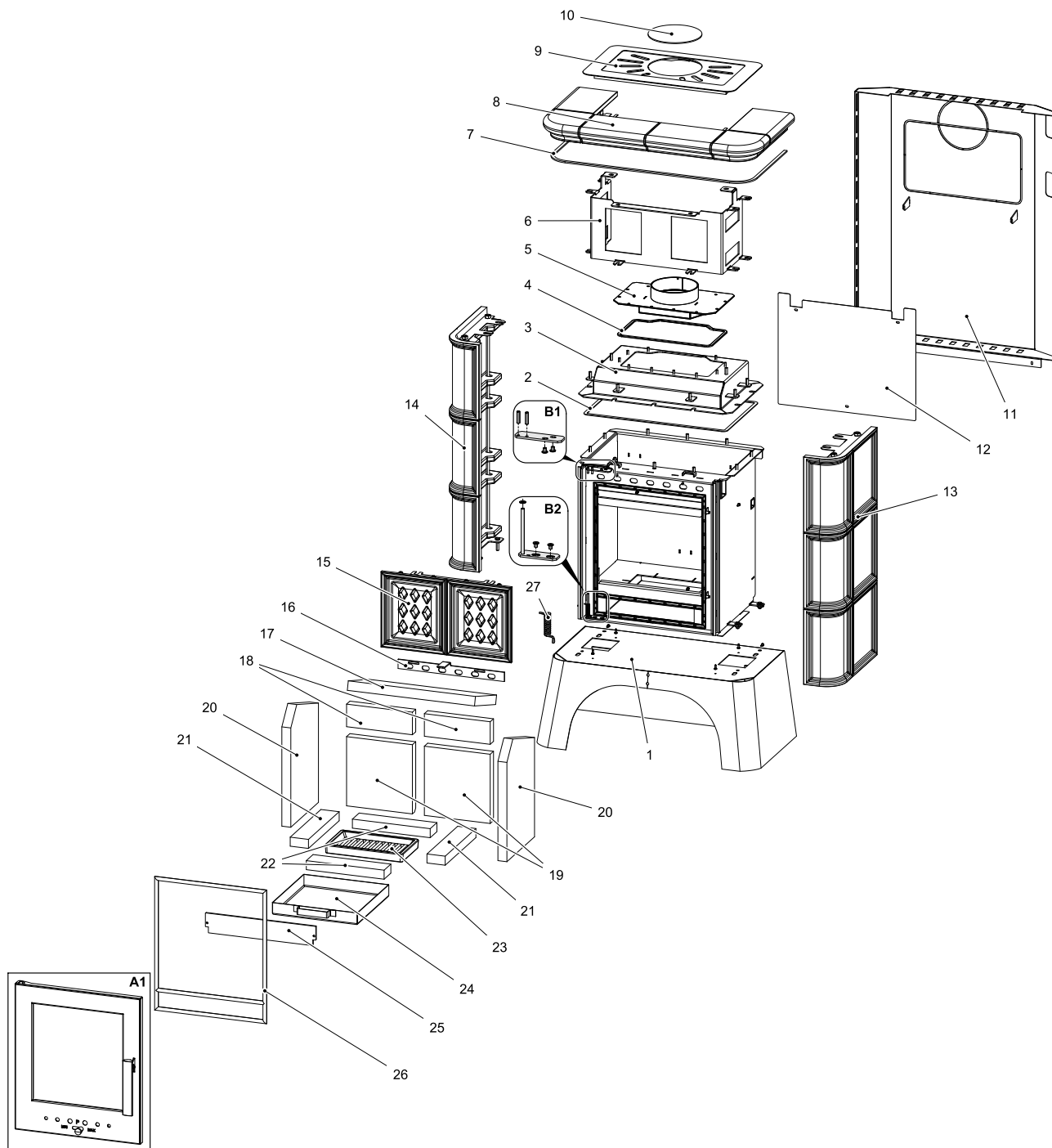
GB



Position	Name
a	Intake of primary air
b	Intake of secondary air
c	Tertiary air output
d	Controller of secondary air
e	Controller of primary air

3. List of spare parts

3.1. Overall scheme of the model



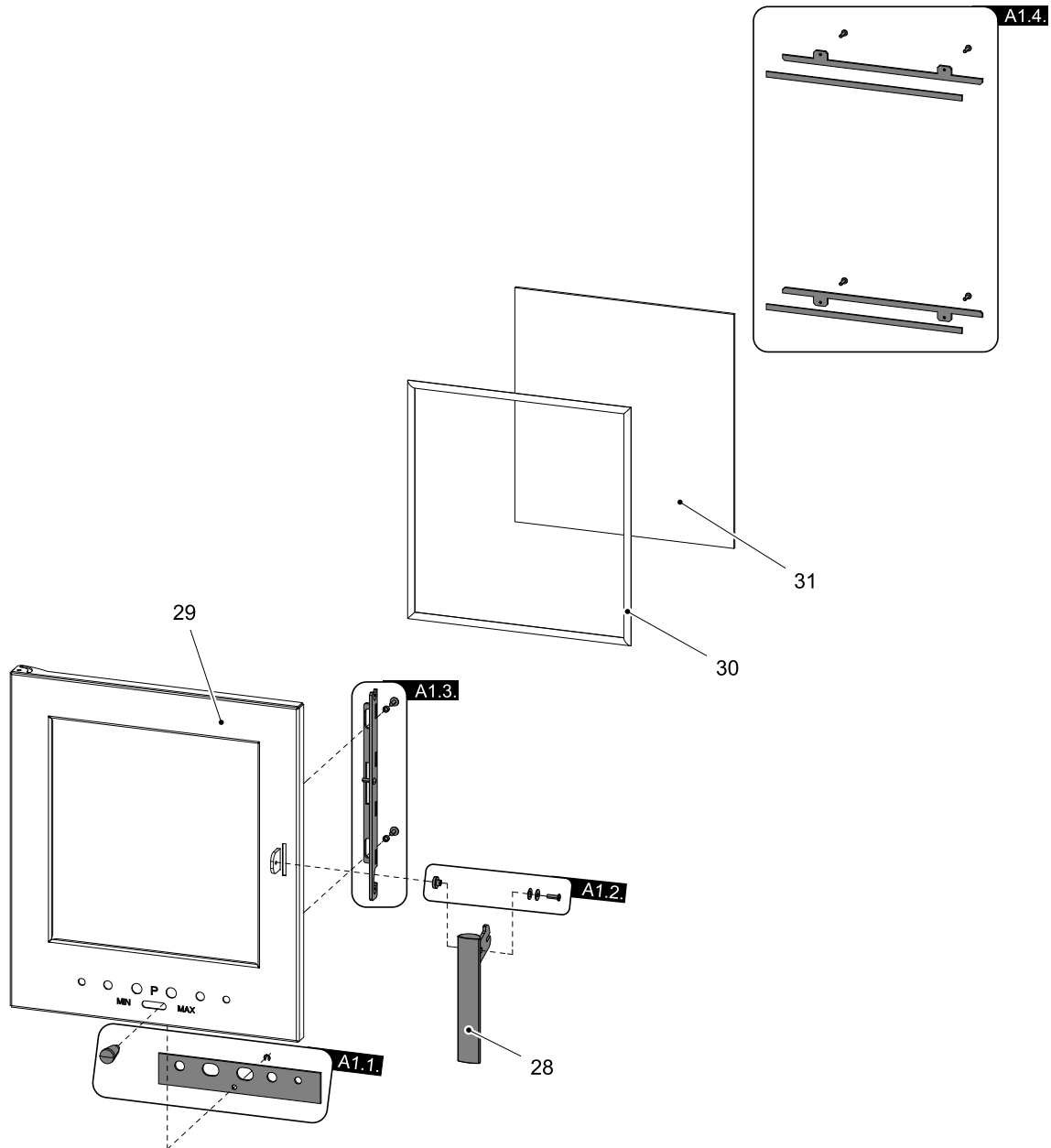
List of spare parts

GB

Item	Name	Quantity	Number of goods
Overall scheme of the model			
A1	Fire-box door (complete)	1 piece	0433900005300
B1	Fire-box door suspension (complete)	1 piece	0331415005040
B2	Fire-box door suspension (complete)	1 piece	0331415005045
1	Base	1 piece	0433900005151

2	Sealing cord of the body lid 10x4 mm	1060 mm	0040210040005
3	Lid of the body	1 piece	0433900005180
4	Flue gas duct packing cord 10x4 mm	990 mm	0040210040005
5	Smoke flue neck	1 piece	0433915305185
6	Lining holder	1 piece	0332015105025
7	Sealing cord 10x4 mm	1350 mm	0040210040005
8	Upper mantelpiece/green	1 piece	0332015006102
8	Upper mantelpiece/brown	1 piece	0332015026102
8	Upper mantelpiece/cream	1 piece	0332015076102
8	Upper mantelpiece/ivory	1 piece	0332015056102
9	Top cover	1 piece	0332015006155
10	Upper blind flange	1 piece	0331415005060
11	Rear cover	1 piece	0433900005140
12	Barrier	1 piece	0332015005020
13	Fireplace tile – side – right/green	1 piece	0332015006101
13	Fireplace tile – side – right/brown	1 piece	0332015026101
13	Fireplace tile – side – right/cream	1 piece	0332015076101
13	Fireplace tile – side – right/ivory	1 piece	0332015056101
14	Fireplace tile – side – left/green	1 piece	0332015106100
14	Fireplace tile – side – left/brown	1 piece	0332015026100
14	Fireplace tile – side – left/cream	1 piece	0332015076100
14	Fireplace tile – side – left/ivory	1 piece	0332015056100
15	Front tiles/green	1 piece	0332015006103
15	Front tiles/brown	1 piece	0332015026103
15	Front tiles/cream	1 piece	0332015076103
15	Front tiles/ivory	1 piece	0332015056103
16	Controller of secondary air	1 piece	0433900005009
17	Lip - loose (fire-clay)	1 piece	0433900005701
18	Fire-clay 75x220x30	2 piece	0433900005505
19	Fire-clay 220x230x30	2 piece	0331415005501
20	Fire-clay 390x250x30	2 piece	0433900005503
21	Fire-clay 61x278x30	2 piece	0433900005506
22	Fire-clay 61x260x30	2 piece	0331415005502
23	Cast-iron grat	1 piece	0020100130005
24	Ash pan	1 piece	0427715006600
25	Protection	1 piece	0433900005008
26	Door sealing cord 10 mm	2000 mm	0040300100005
27	Door spring	1 piece	0332015005035

3.2. Detail A1



Item	Name	Quantity	Number of goods
Detail A1			
28	Fire-box door lever lock (complete)	1 piece	0433615025318
A1.1.	Controller of primary air — set	1 piece	0430815006306
A1.2.	Handle connecting material — set	1 piece	0081010180005
A1.3.	Closing mechanism drawbar — set/anthracite	1 piece	0331415017330
A1.4.	Glass holder — set	1 piece	0331415006306
29	Fire-box door (welded part)	1 piece	0332015007200
30	Glass sealing cord 10 mm	1350 mm	0040710100005
31	Refractory glass (318x338)	1 piece	0332015005304

4. Dimensioned diagram

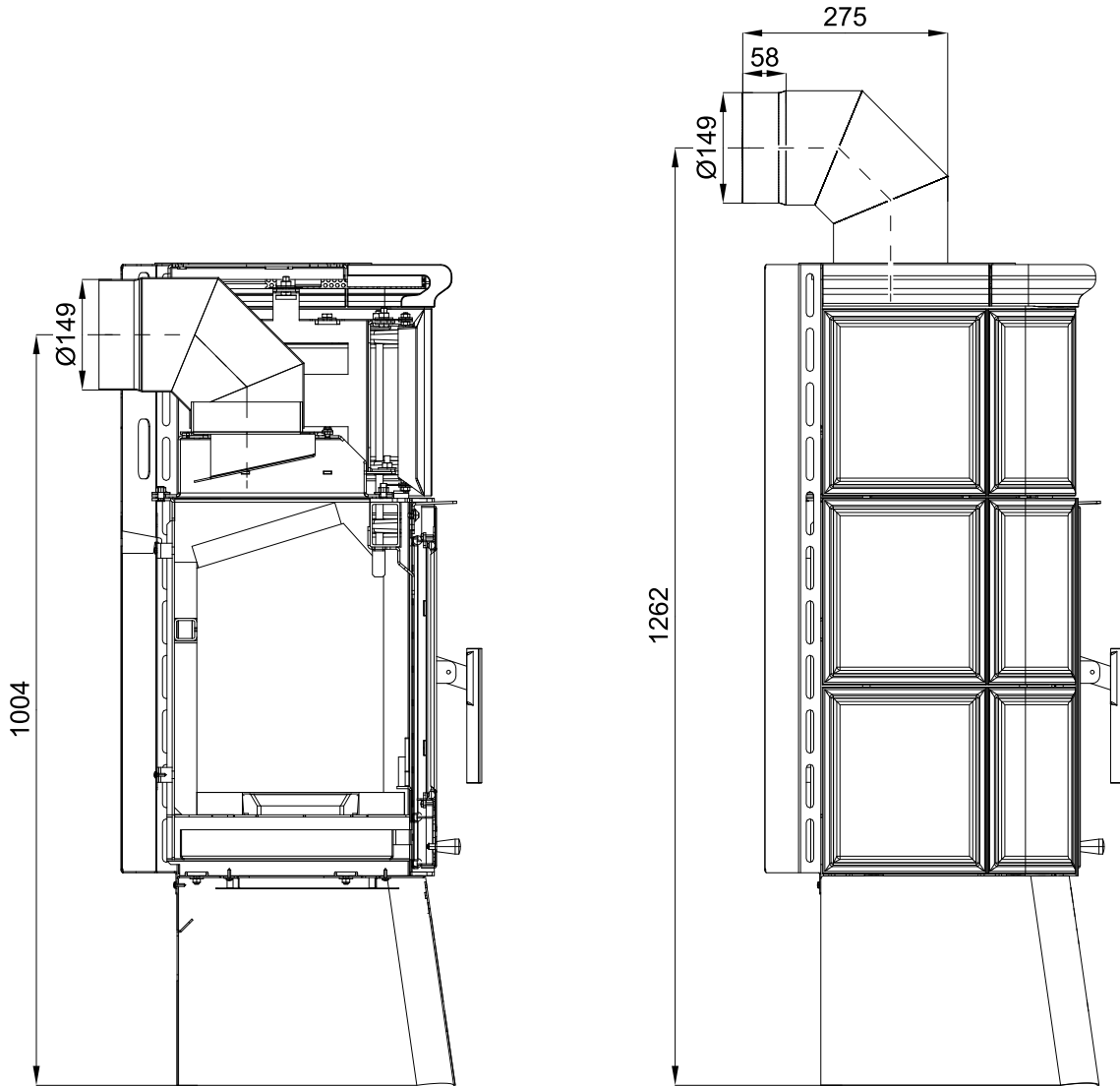


Note

The elbow of flue gas installation is not included in the delivery (special accessories).

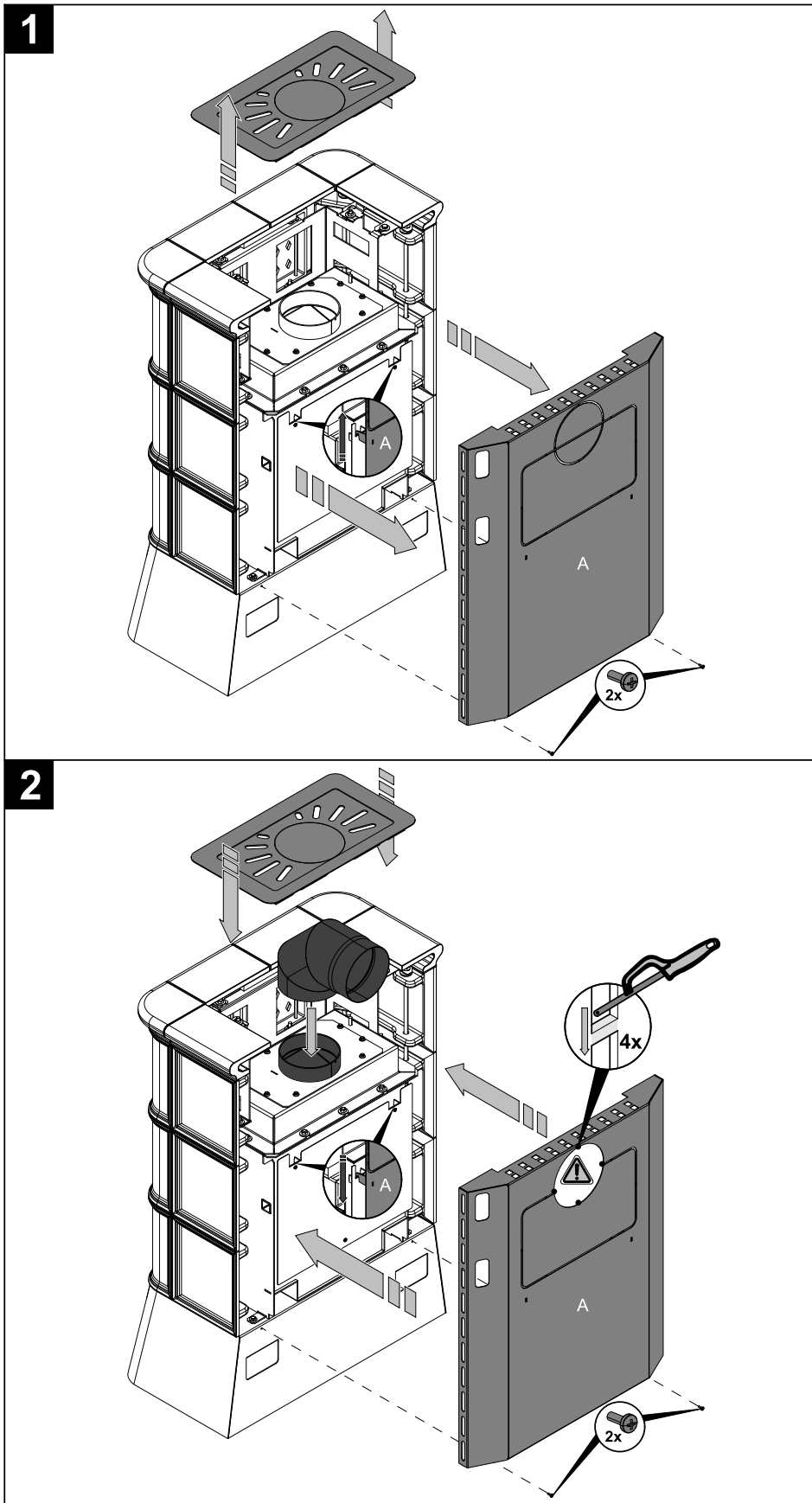
Dimensioned diagram

GB



Item	Name	Quantity	Number of goods
—	Elbow of flue gas	1 piece	0332015007065

5. Installation of flue elbow

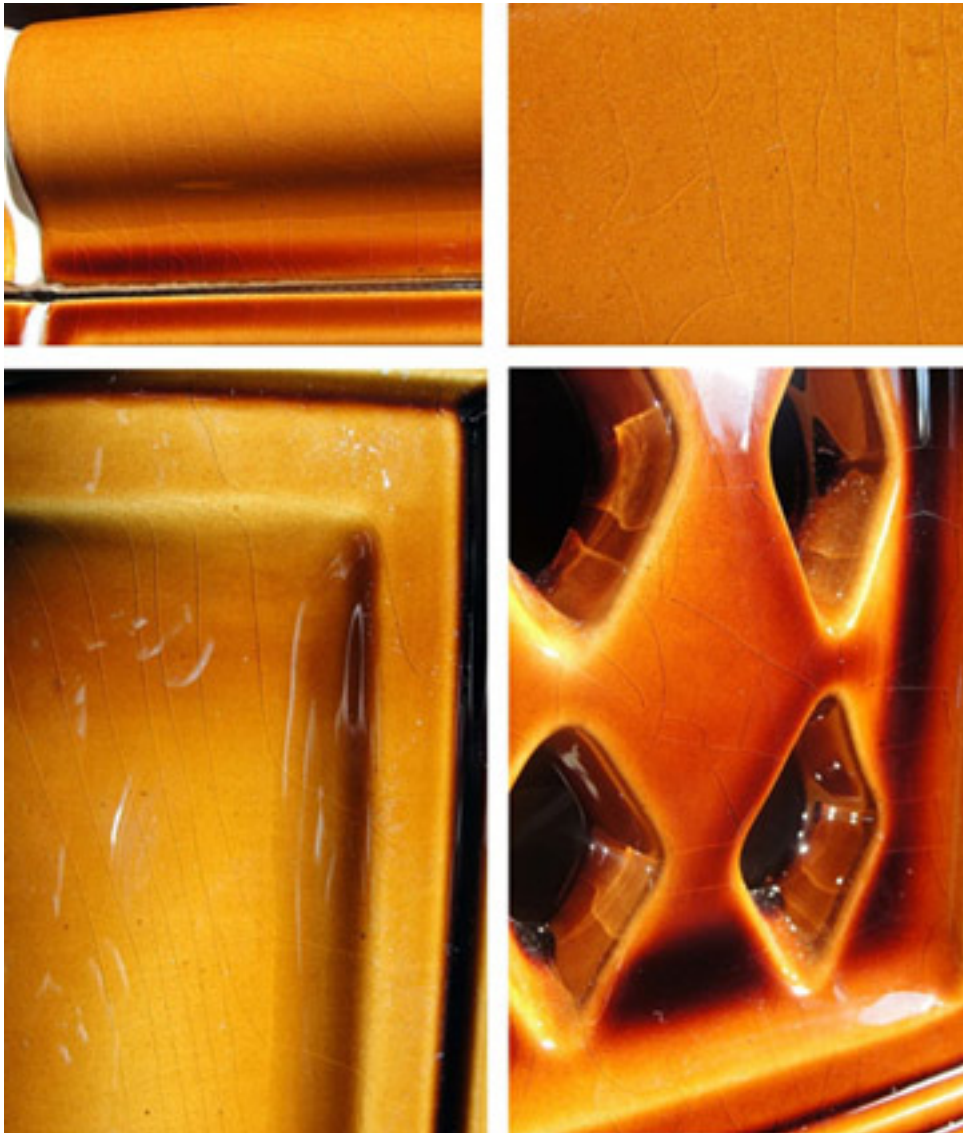


6. Cracks in the glazing layer

The ceramic oven tile is a brittle, porous and natural material which continuously works following changes of temperature and humidity. Consequently some small cracks may occur in the glazing, so called hairline cracks.

During slow cooling after firing, the glaze looks rather like a liquid than a solid substance. The ceramic oven tile shrinks and the glaze adapts to its changes easily. From a certain temperature, however, the glaze starts to behave as a solid substance with its own thermal expansion and thus some tension between the glaze and the ceramic tile occurs. If – during cooling - the glaze shrinks more than the ceramic oven tile, the higher stress values in the glaze may cause uncontrolled hair crack formation. All traditional and historically verified glazes exhibit hairline cracks and many customers value them highly.

As for ceramic oven tiles a slight colour tint and hairline cracks in the glaze are natural. They do not affect the quality and they do not represent any cause for complaints.

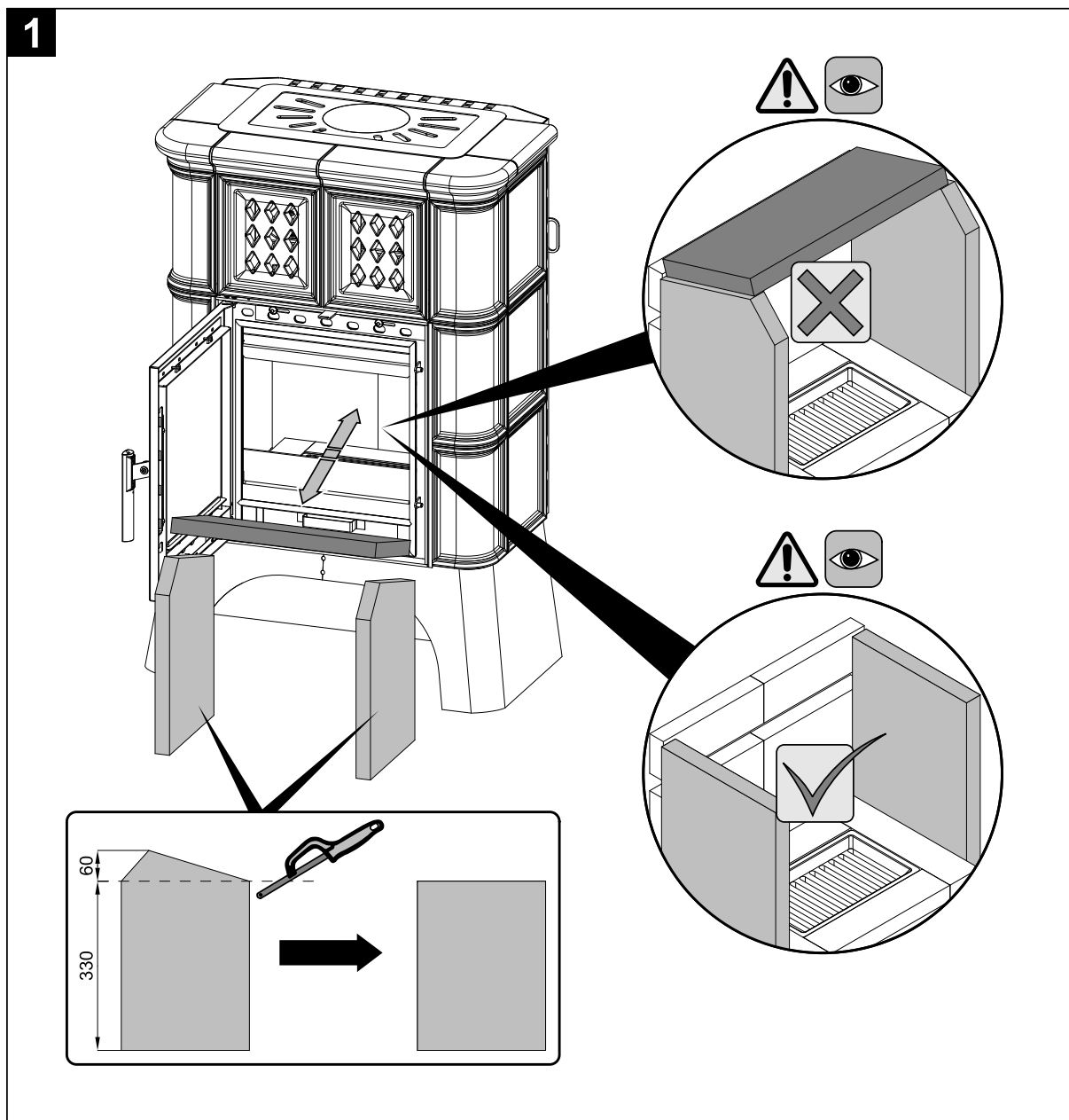


7. Heat-conducting exchanger assembly



Note

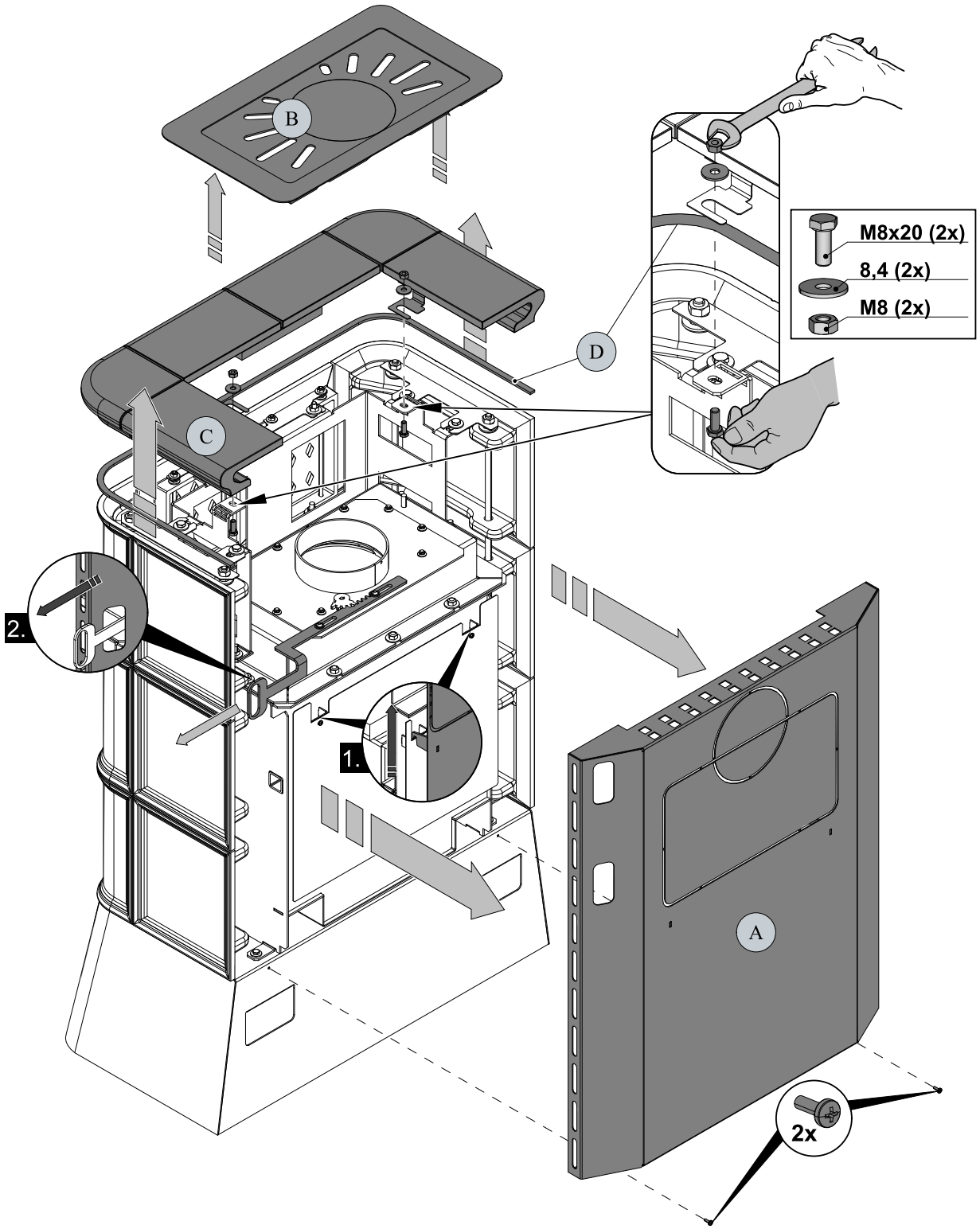
It is possible to add a heat-conducting exchanger to the stove assembly. The exchanger may be ordered as a special accessories.



Item	Name	Quantity	Number of goods
—	Exchanger assembly Treviso II	1 piece	0332015006100

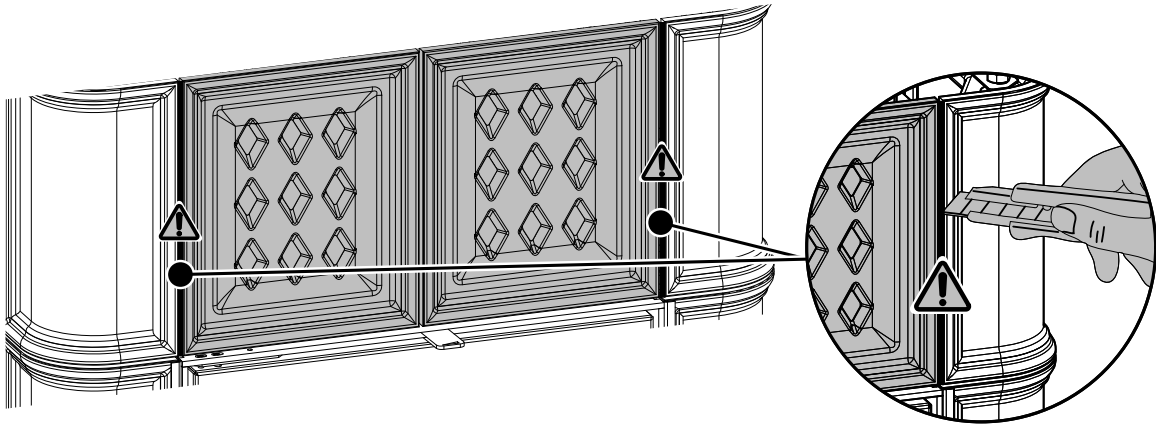
Heat-conducting exchanger assembly

2

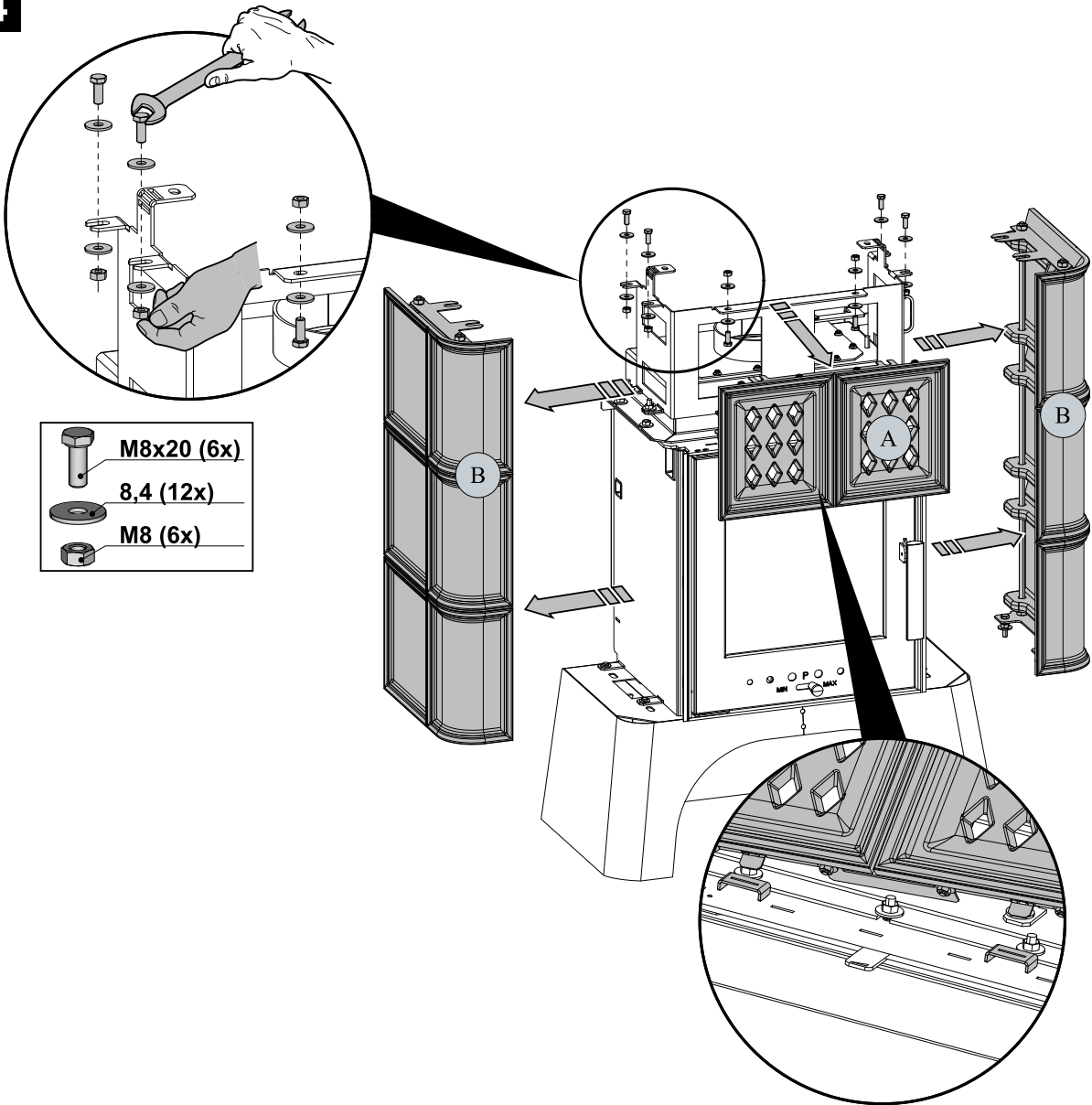


GB

3

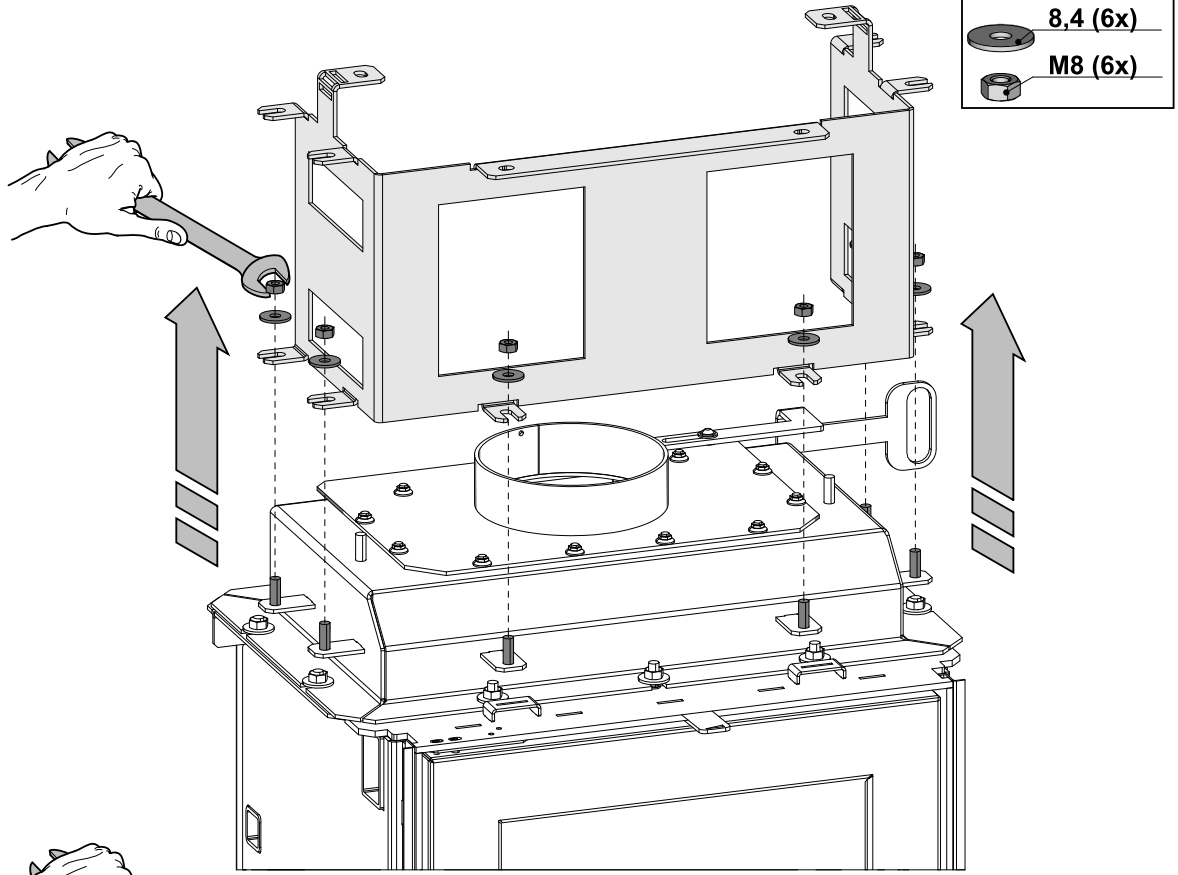


4

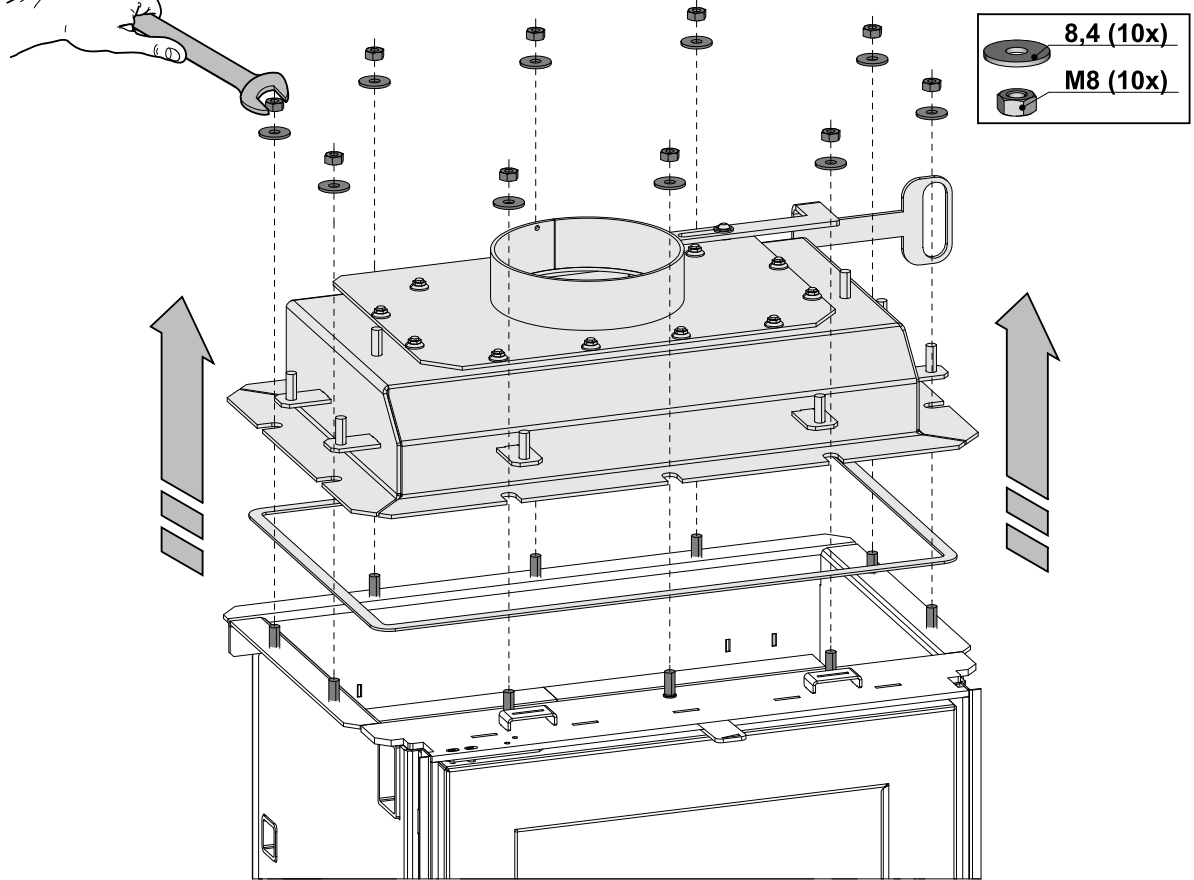


Heat-conducting exchanger assembly

5

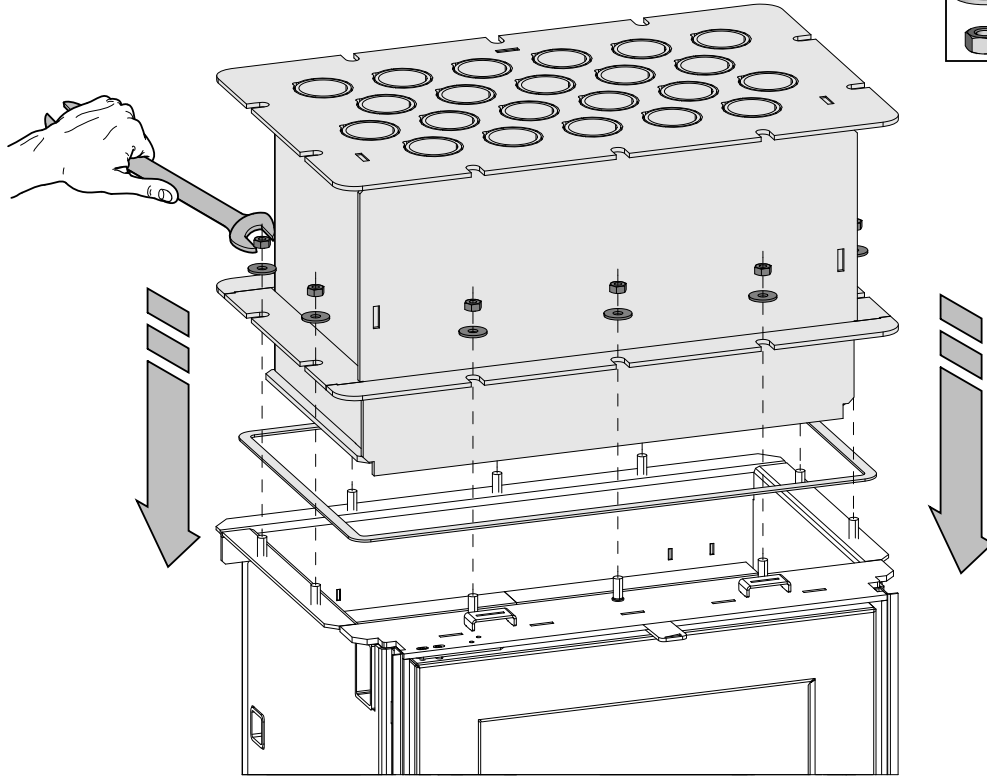




6



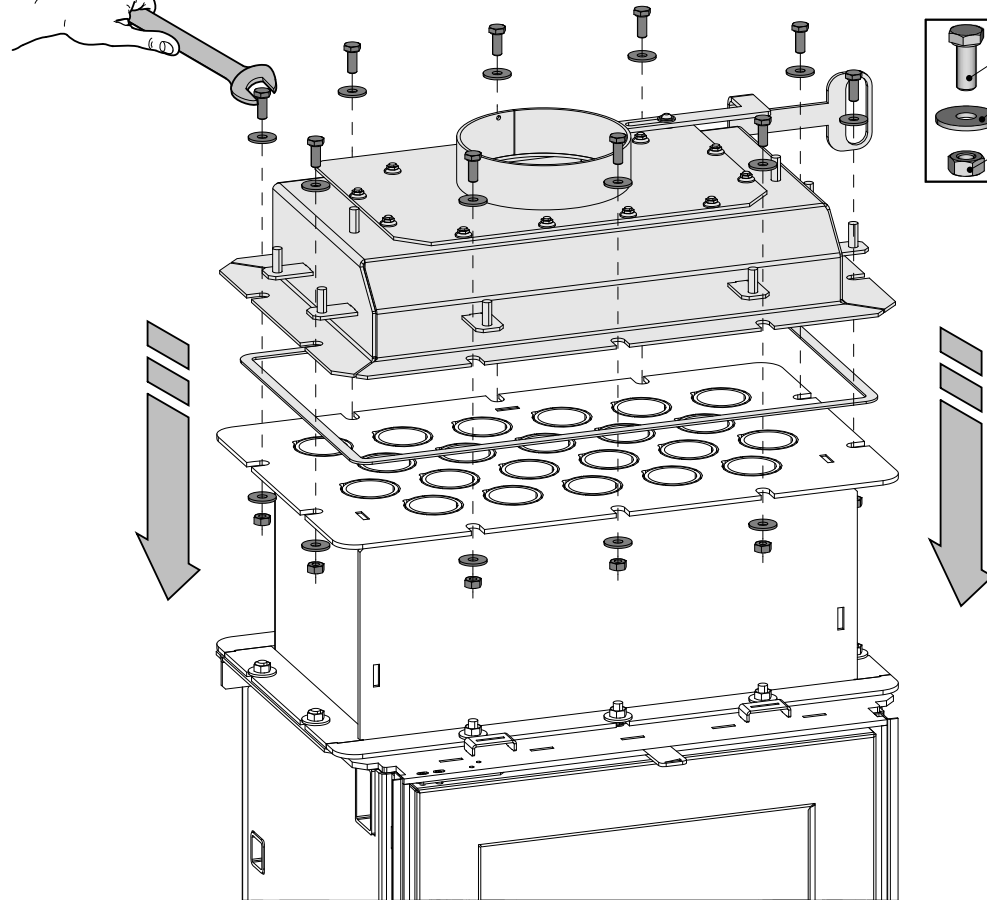
GB




7

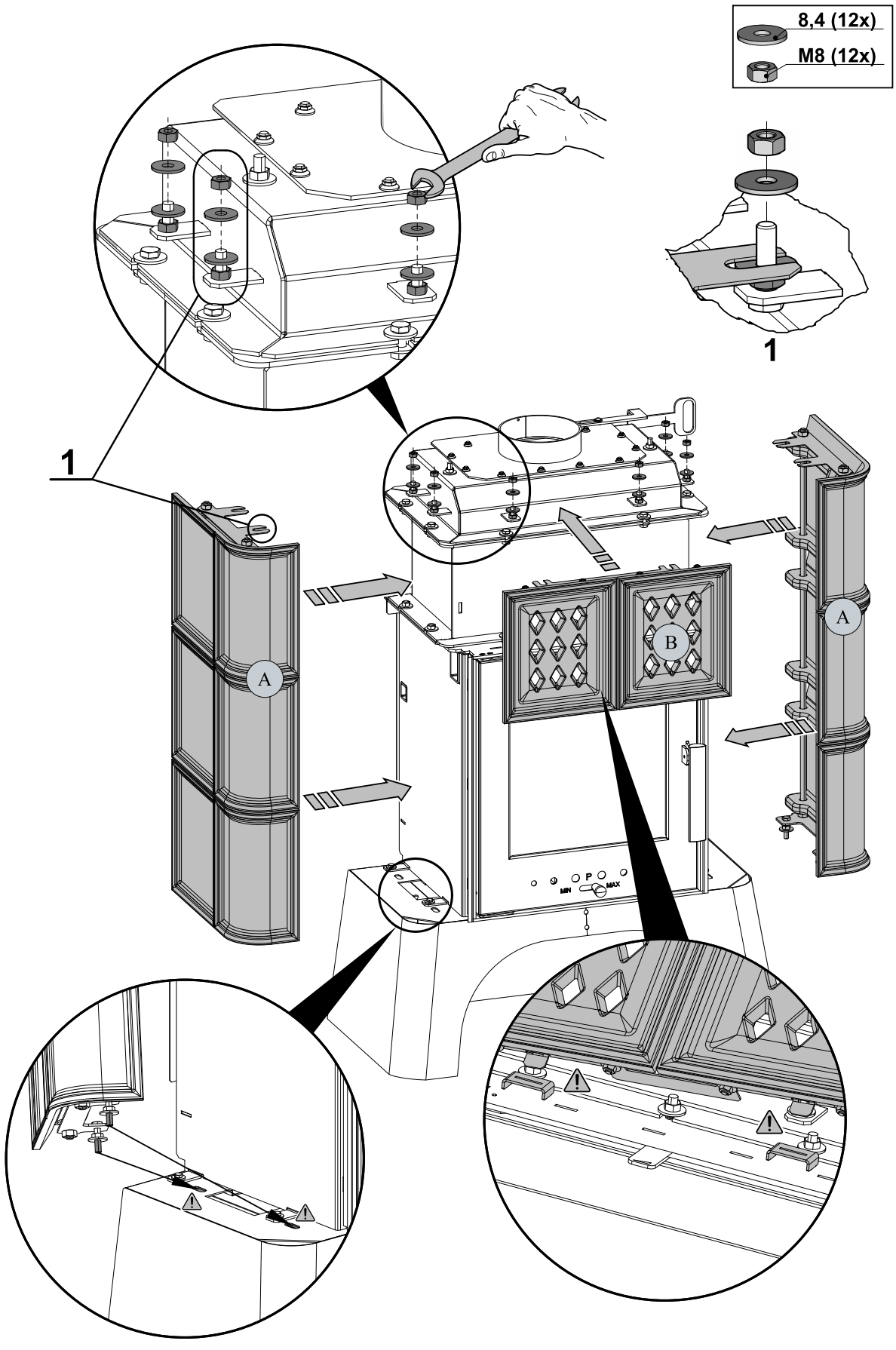


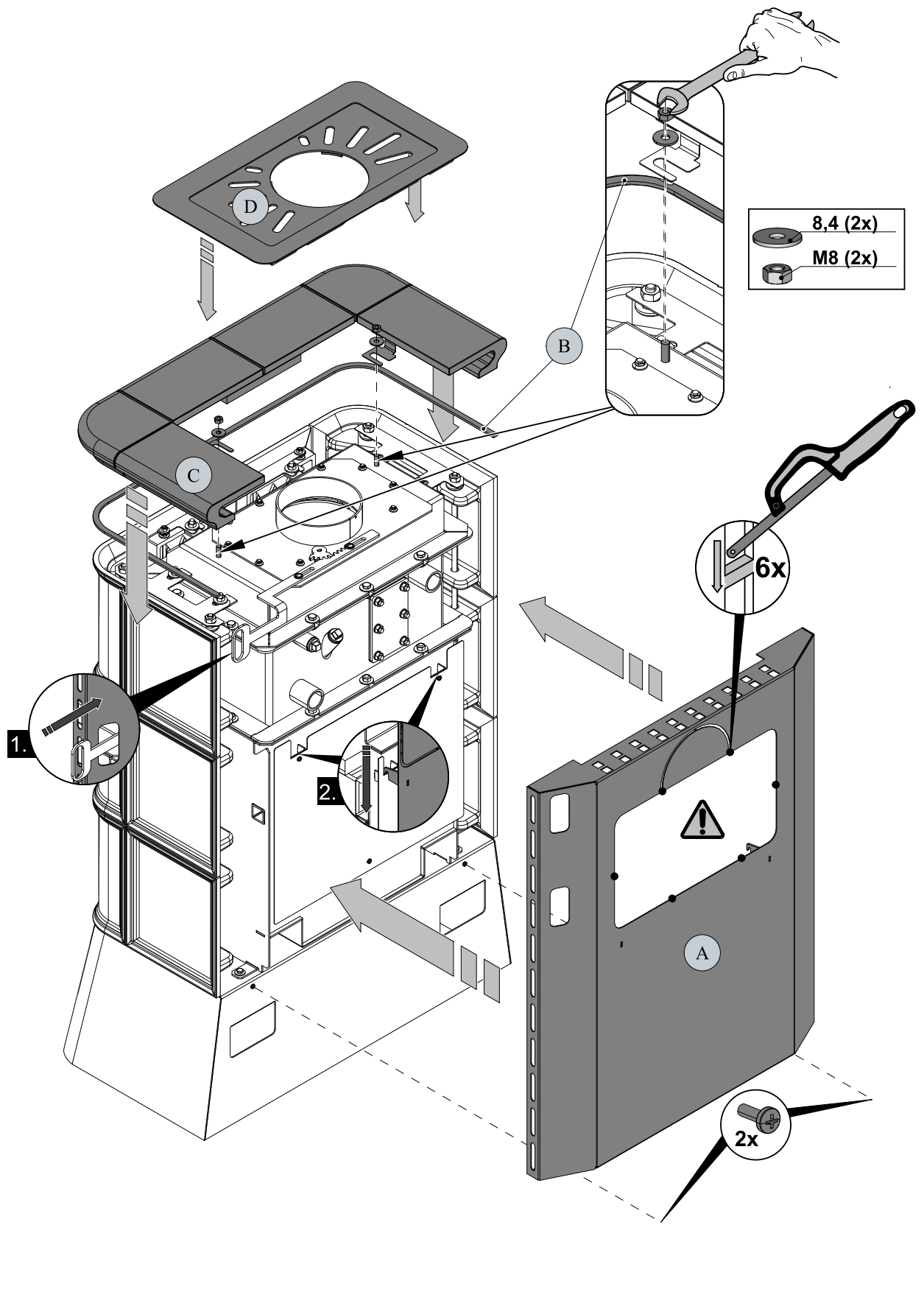
-  8.4 (10x)
-  M8 (10x)

8

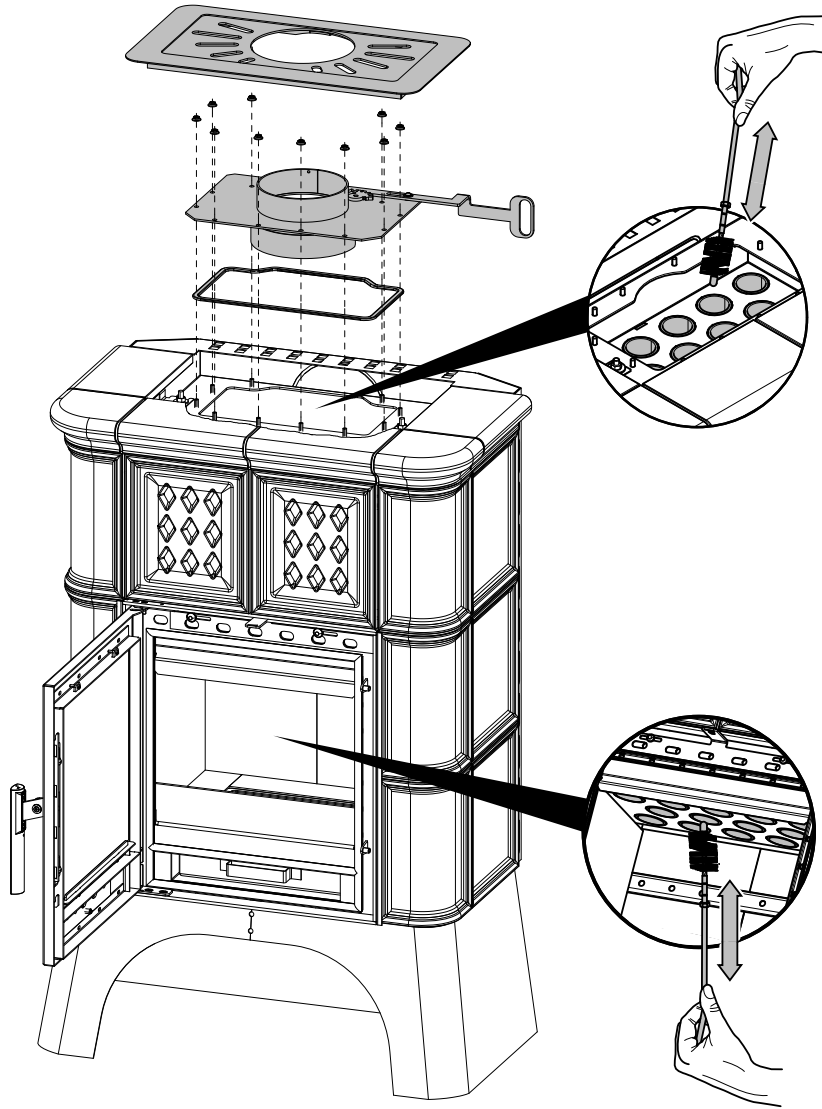
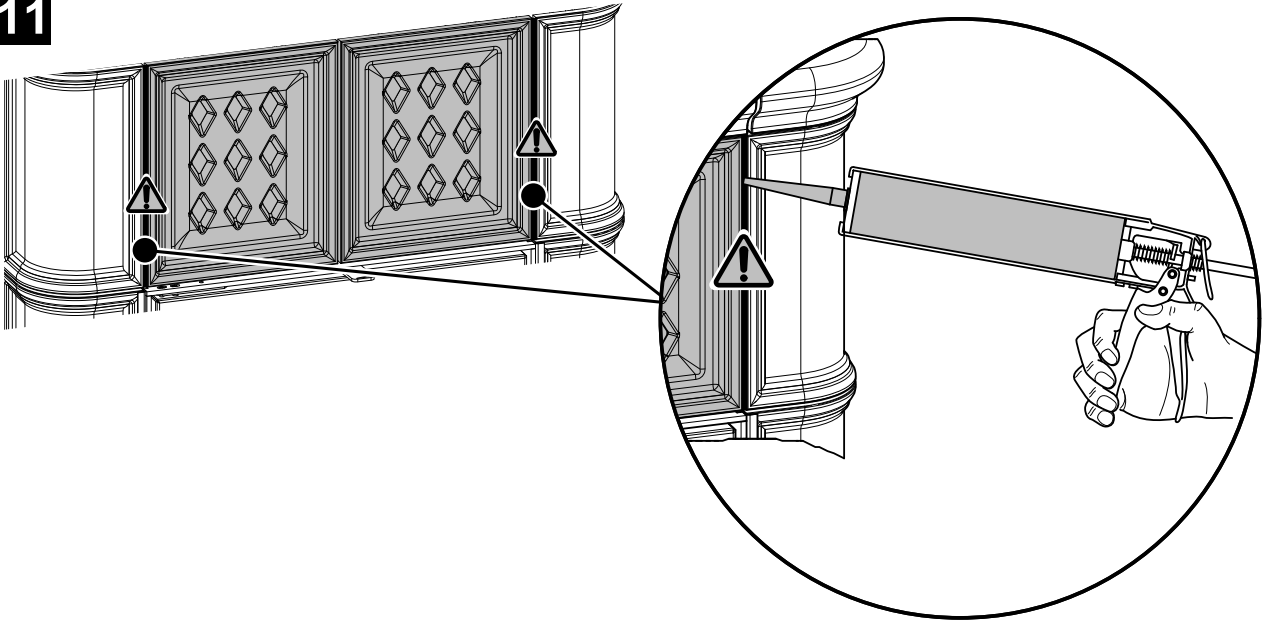


-  M8x20 (10x)
-  8.4 (20x)
-  M8 (10x)





11

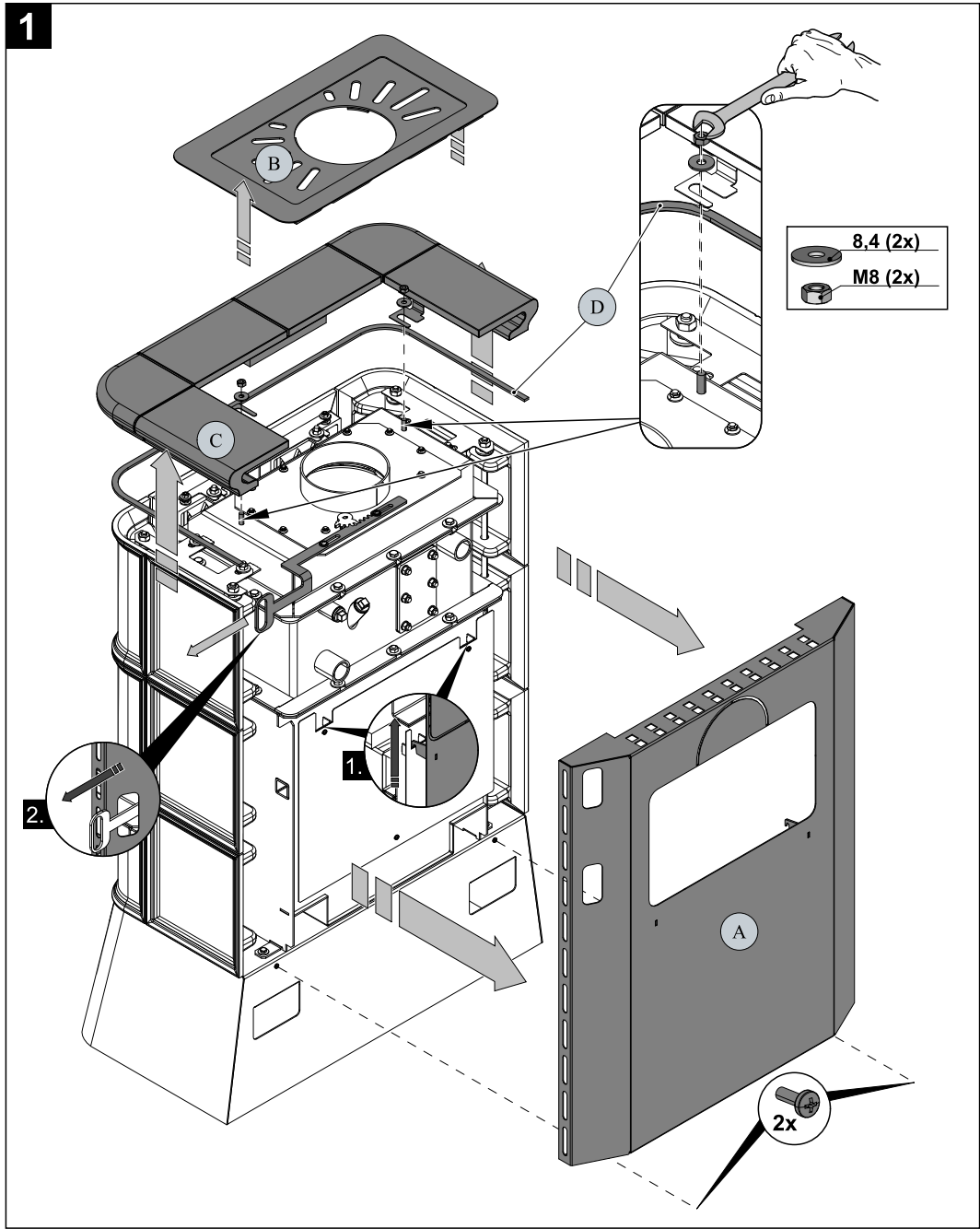


8. Removal of heat-conducting exchanger



Note

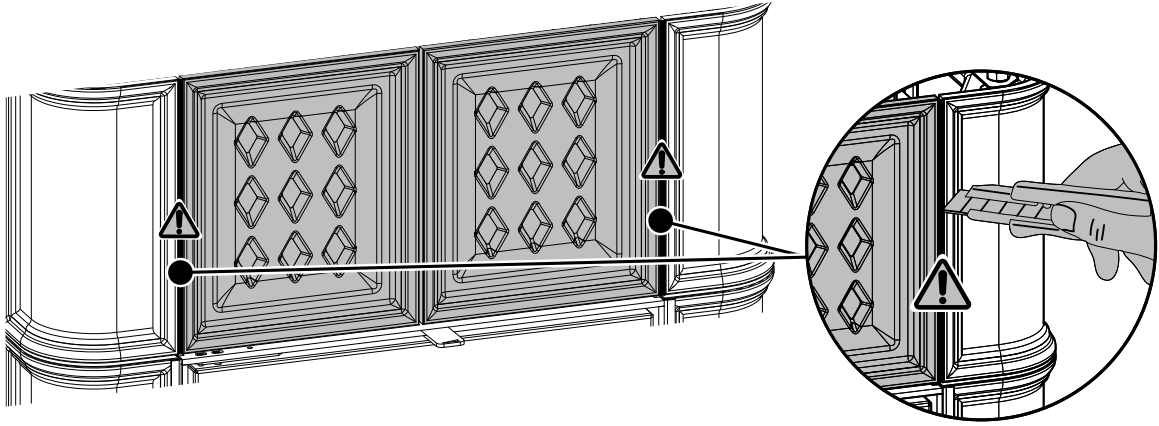
The safety blind set may be ordered as a special accessories.



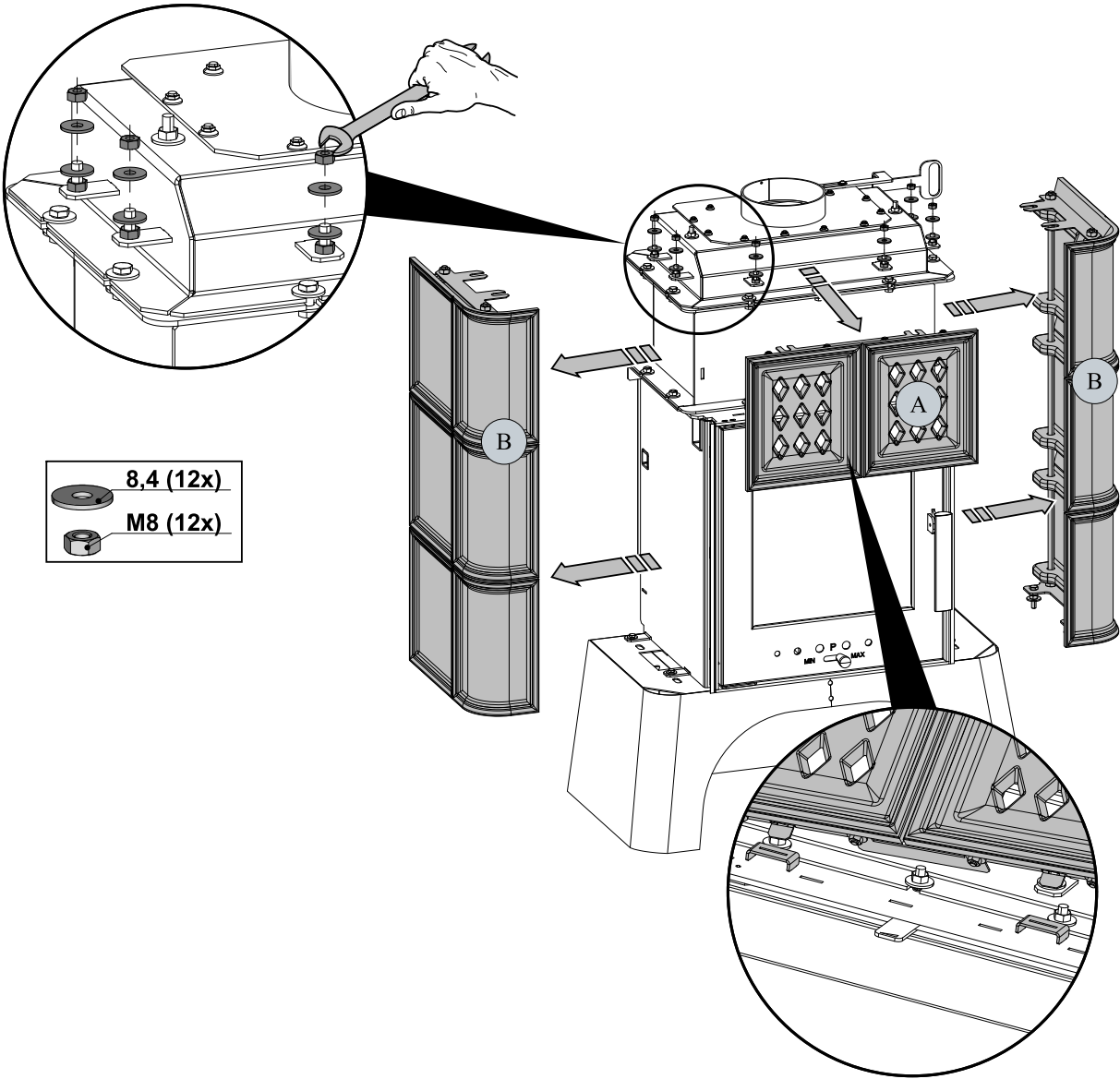
Item	Name	Quantity	Number of goods
—	Safety blind set Treviso II	1 piece	0433900005000

Removal of heat-conducting exchanger

2

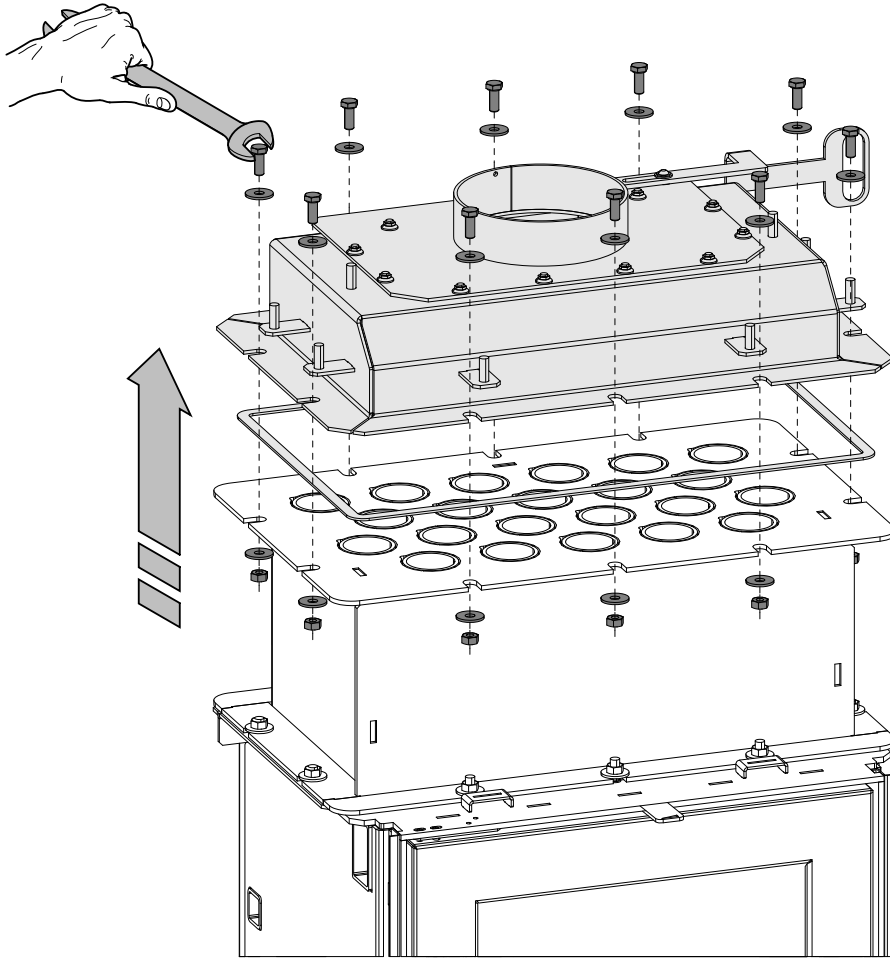


3



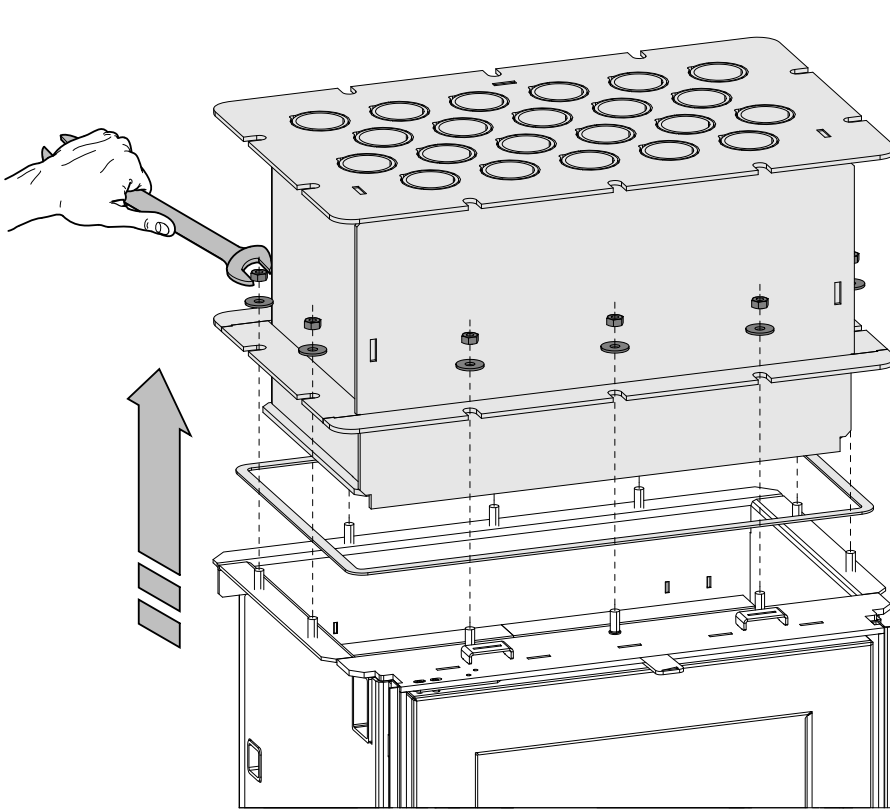
GB

4



- M8x20 (10x)
- 8.4 (20x)
- M8 (10x)

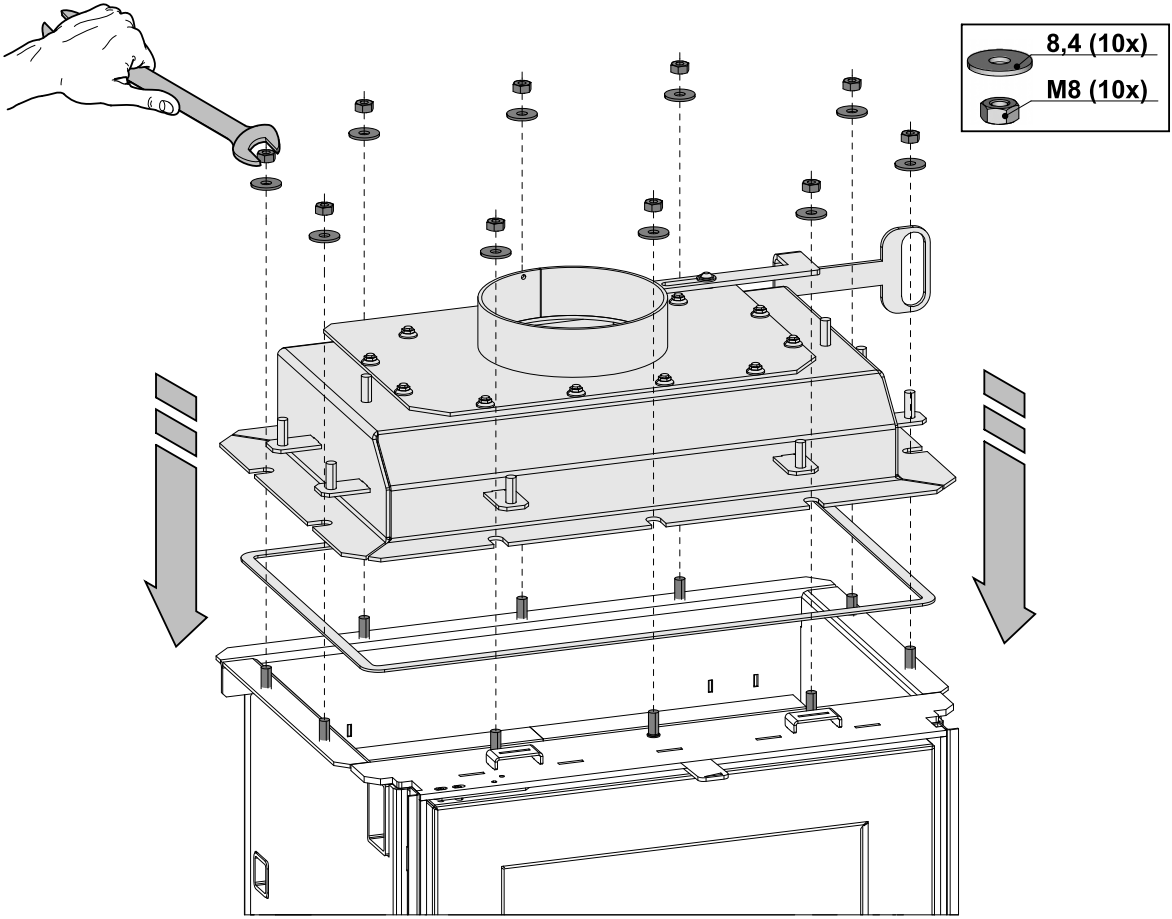
5



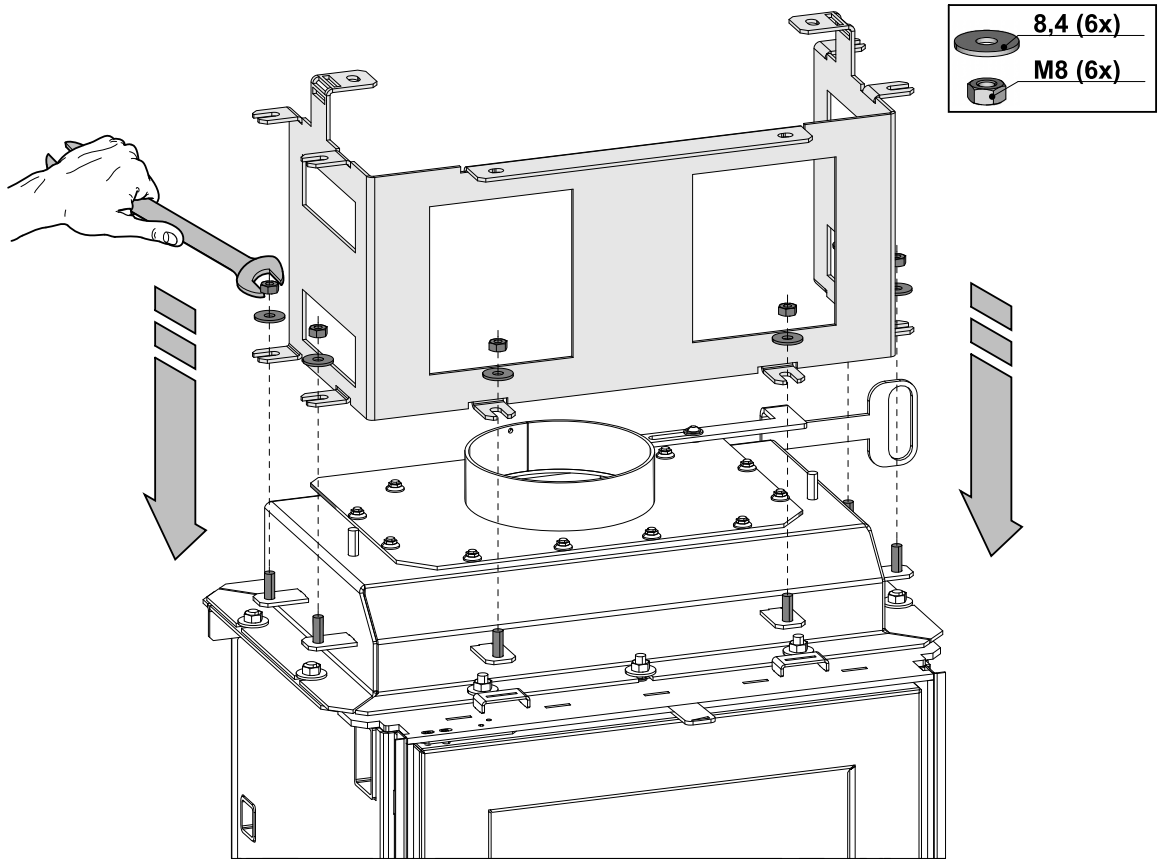
- 8.4 (10x)
- M8 (10x)

Removal of heat-conducting exchanger

6

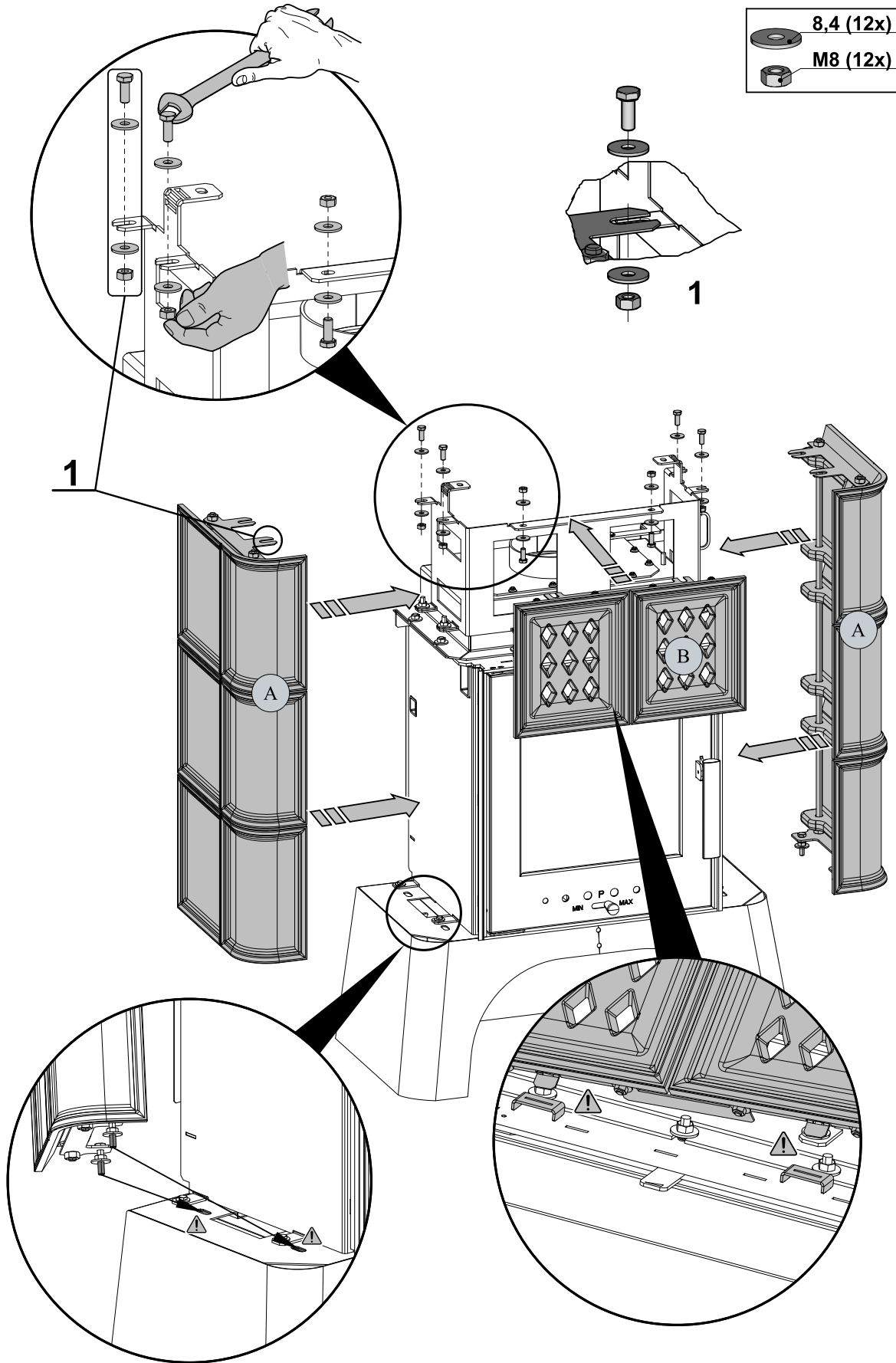


7



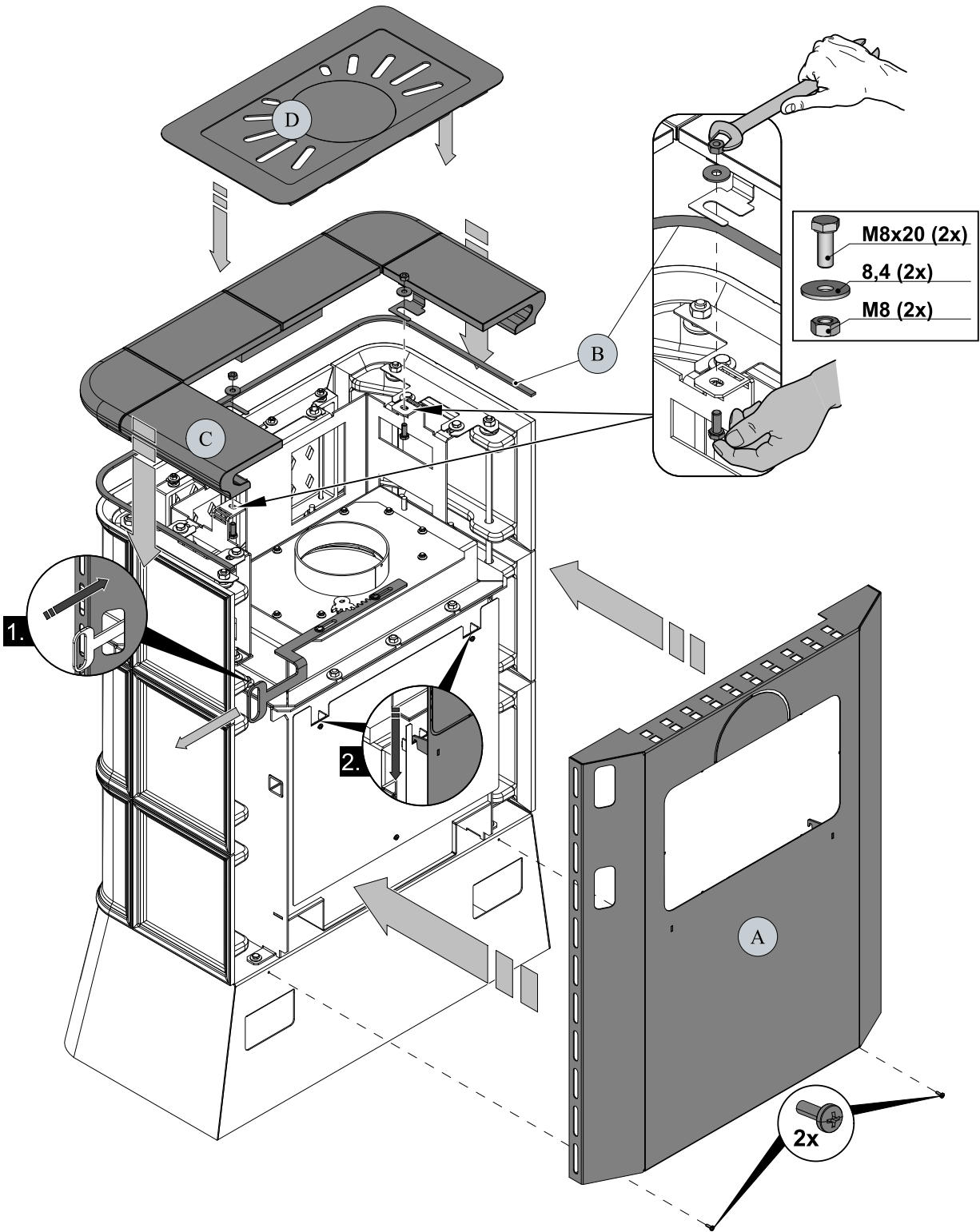
GB

- 8,4 (12x)
- M8 (12x)



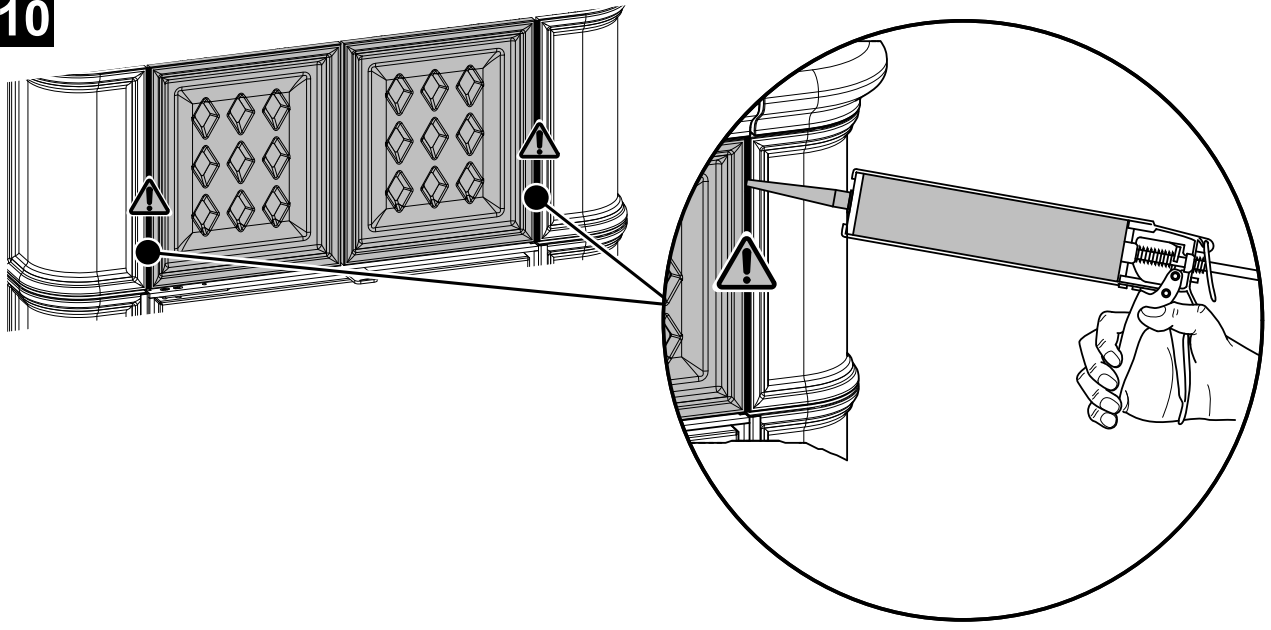
Removal of heat-conducting exchanger

9



GB

10



11

