

HAAS  
+  
SOHN

## Bryne with exchanger

**Equipment sheet**  
Fireplace stove with exchanger

**GB**

# Introduction

**We thank you very much for purchasing our product!**

The description of the heating device will inform you in detail about the design, technical specification and operation of the heating device. We recommend you to acquaint yourselves closely with these data. In this way, you will avoid possible faults during the proper assembly and operation.

**You will find** detailed conditions of installation and operation in General Manual of Operation (included in the scope of the delivery).

## Notes in the text

GB



Of utmost importance there are the notes entitled **WARNING**. The notes entitled **WARNING** advise you on **serious danger of damage to the heating device or of an injury**.



The note entitled **Notice** advises you on possible damage to your heating device.



The note entitled **Important** calls your attention to the information important for the operation of your heating device.



The note itself calls your attention to the information important for the operation of your heating device in general.

# Contents

<b>1. Technical data</b> .....	1
<b>2. Technical description</b> .....	2
<b>3. List of spare parts</b> .....	3
3.1. Overall scheme of the model .....	3
3.2. Detail A1 .....	5
3.3. Detail A2, A3, A4, A5.....	7
<b>4. Dimensioned diagram</b> .....	9
4.1. Connection of the exchanger .....	9
<b>5. Easy control</b> .....	10
<b>6. Kindling vent</b> .....	11
<b>7. Installation of the coolant loop</b> .....	12
<b>8. Instructions for cleaning of the exchanger</b> .....	13



# 1. Technical data


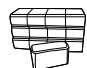
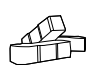
## Suitable fuel:

As concerns suitable fuel to be employed, see the chapter **2.2 Fuel** in the General Manual of Operation.

## Proper operation:

As concerns the proper and safe operation of the fireplace stove, see the chapters **2. Description of the combustion process** and **5. Operating instructions** in the General Manual of Operation.

### Instructions for the control of combustion process

Fuel		Output of the heating device	Quantity of fuel	Primary air	Secondary air	Tertiary air
<b>Blockwood</b>		100%	3 kg/hour	Easy control 100%		
		33%	1 kg/hour	Easy control 50%		
<b>Eco-briquettes</b>		100%	2,8 kg/hour	Easy control 100%		
		33%	0,9 kg/hour	Easy control 50%		
<b>Coal briquettes</b>		100%	2 kg/hour	Easy control 25%		
		33%	0,7 kg/hour	Easy control 10%		

### Technical data

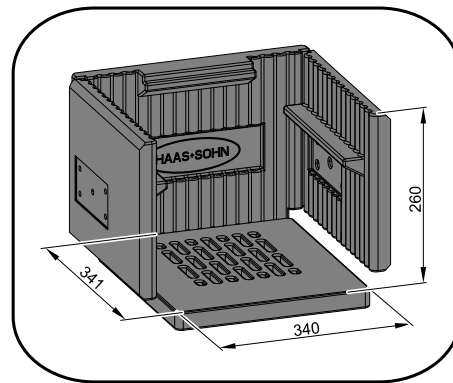
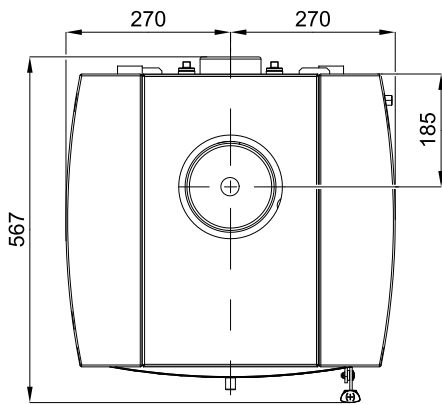
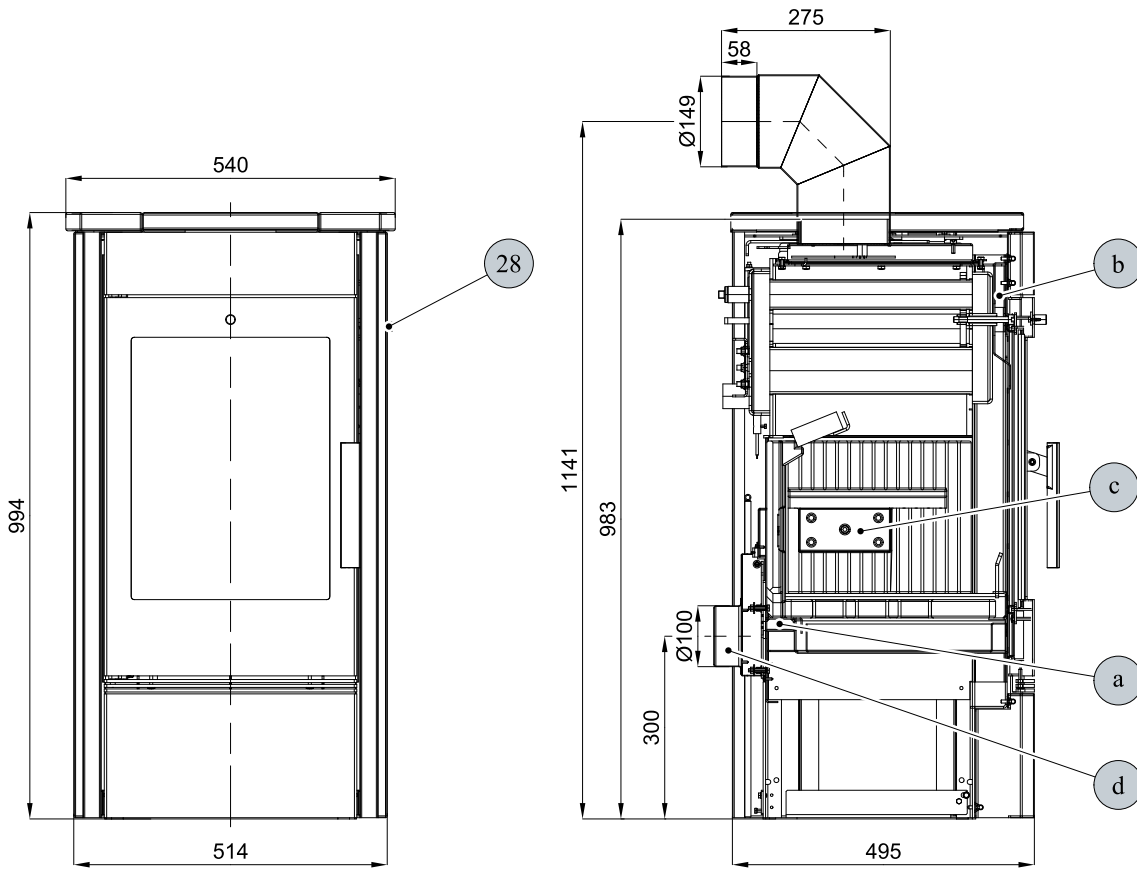
	Blockwood	Eco-briquettes	Coal briquettes
Achieved heat output (100%)	10,1 kW	10,2 kW	10,1 kW
Nominal heat output	10 kW	10 kW	10 kW
Reduced heat output (33%)	3,3 kW	3,4 kW	3,3 kW
Output delivered by the stove body only	2,8 kW	3,1 kW	5 kW
Output available for heating of water	7,3 kW	7,1 kW	5,1 kW
Maximum stoking amount of the fuel	3 kg/hour	2,8 kg/hour	2 kg/hour
Average temperature of combustion products behind the smoke flue neck	281 °C	292 °C	232 °C
Maximum mass flow of dry combustion products	7,5 g/s	8,1 g/s	11,4 g/s
Energy efficiency	81 %	80,6 %	79,2 %
Average concentration of CO <sub>2</sub>	11 %	10,5 %	6,9 %
Concentration of CO in combustion products at 13% O <sub>2</sub>	1153 mg/Nm <sup>3</sup>	1186 mg/Nm <sup>3</sup>	2331 mg/Nm <sup>3</sup>
Average concentration of dust at 13% O <sub>2</sub>	19 mg/Nm <sup>3</sup>	25,5 mg/Nm <sup>3</sup>	45 mg/Nm <sup>3</sup>
The amount of combustion air at nominal output	22 m <sup>3</sup> /hour	23 m <sup>3</sup> /hour	30 m <sup>3</sup> /hour
Tested in compliance with EN 13 240			

### Technical information

Height	994 mm
Width	540 mm
Depth	567 mm
Weight	189 kg
Diameter of the smoke flue	150 mm
Maximum operating over-pressure of the exchanger	0,2 MPa
Water contents of the exchanger	14 l
Recommended heat gradient (t <sub>output</sub> – t <sub>input</sub> )	75 – 60 °C
Min. chimney stack draught in the smoke flue neck	12 Pa
Heating capacity (middle heat losses ) at 10,2 kW	cca 184 m <sup>3</sup>
Controllable output	3,3 – 10,2 kW

# 2. Technical description

Technical description

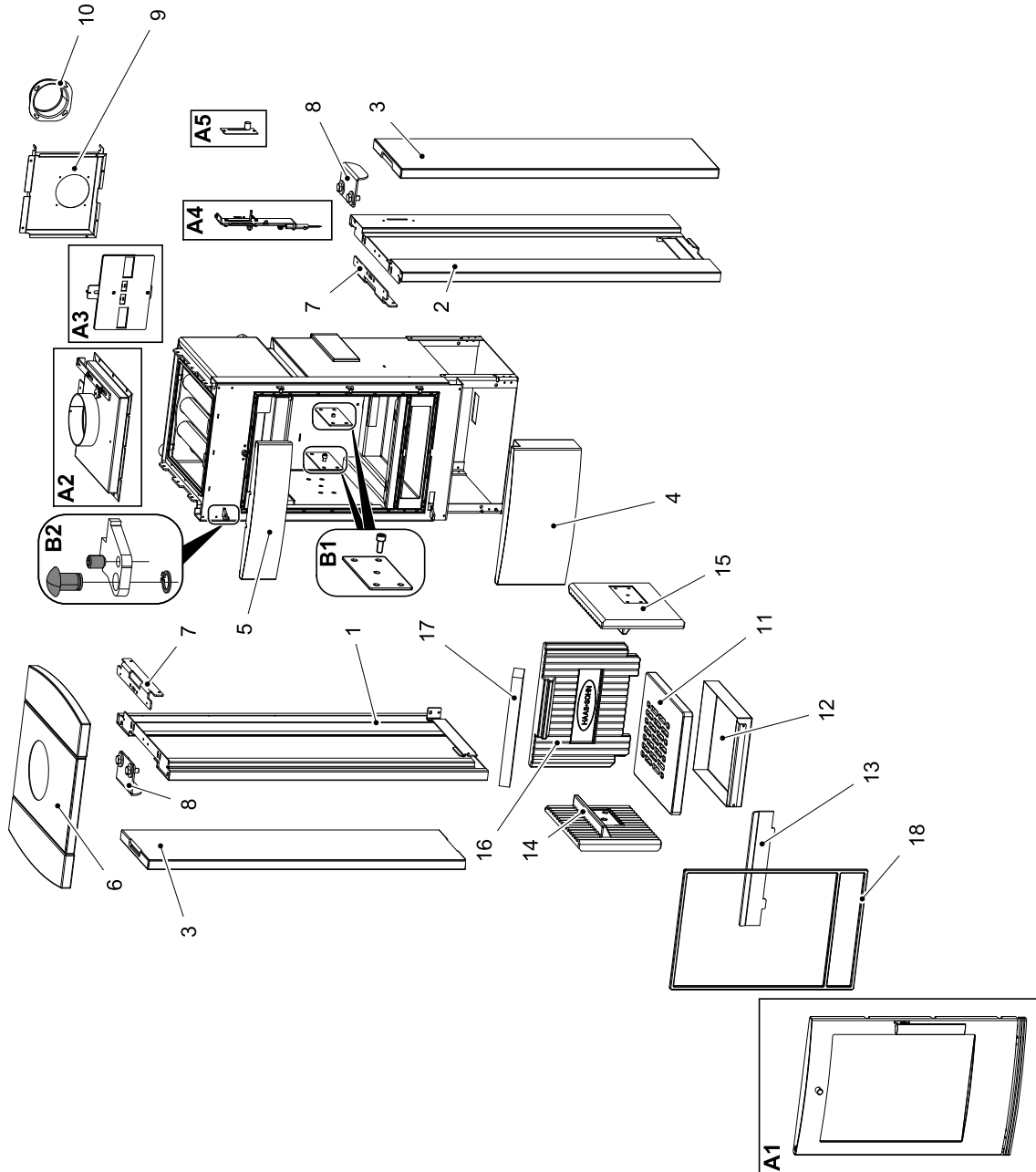


GB

Position	Name
28	Easycontrol — Controller
a	Intake of primary air
b	Intake of secondary air
c	Tertiary air output
d	External air input (Ø100)

# 3. List of spare parts

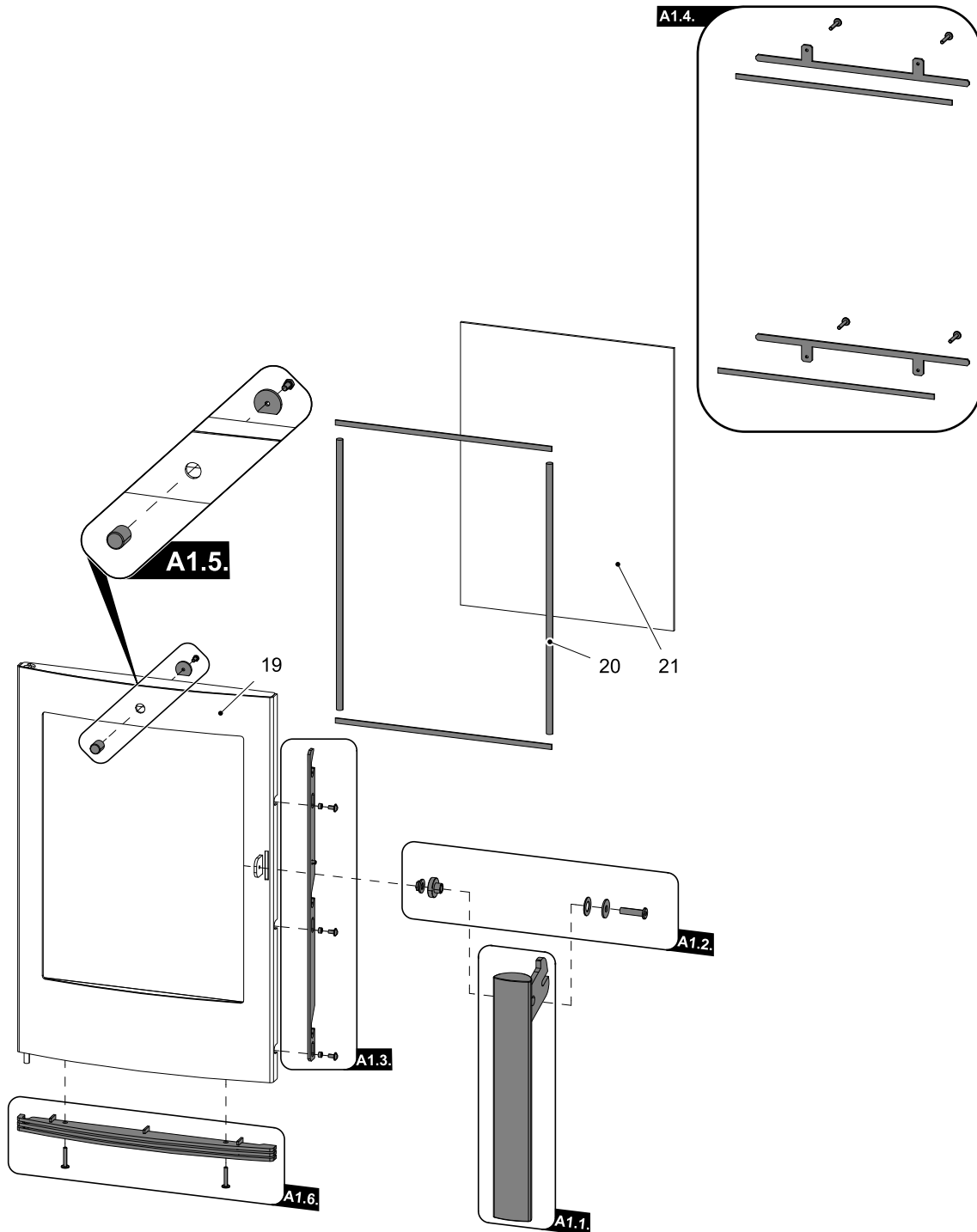
## 3.1. Overall scheme of the model



Item	Name	Quantity	Number of goods
<b>Overall scheme of the model</b>			
<b>A1</b>	Fire-box door (complete)/black-silver	1 piece	0434515005300
<b>A2</b>	Lid (complete)/black	1 piece	0434515015095
<b>A3</b>	Sliding valve (complete)/black	1 piece	0434615505004
<b>A4</b>	Control (complete)/Easycontrol	1 piece	0434515006060
<b>A5</b>	Controller (complete)	1 piece	0434615005005
<b>B1</b>	Lining sealing — set	1 piece	0434515005510
<b>B2</b>	Hinge connecting material — set	1 piece	0434515005128
<b>1</b>	Lateral cover — left/black	1 piece	0434516016111
<b>2</b>	Lateral cover — right/black	1 piece	0434516015111
<b>3</b>	Lateral lining/white sandstone	2 piece	0434516015102
<b>4</b>	Lower cover/black	1 piece	0434515015146
<b>5</b>	Upper cover/black	1 piece	0435015115145
<b>6</b>	Upper lid/white sandstone	1 piece	0434516006200
<b>7</b>	Upper holder/black	1 piece	0434516005025
<b>8</b>	Stone holder	1 piece	0434516015105
<b>9</b>	Rear cover	1 piece	0434515005033
<b>10</b>	External air input (Ø100)	1 piece	0088500050008
<b>11</b>	Grate/lackfire	1 piece	0434515005053
<b>12</b>	Ashpan	1 piece	0434515005030
<b>13</b>	Protection/black	1 piece	0434515005040
<b>14</b>	Refractory lining — left (60x250x307)	1 piece	0434615005504
<b>15</b>	Refractory lining — right (60x250x307)	1 piece	0434615005503
<b>16</b>	Refractory lining — rear (60x290x375)	1 piece	0434615005501
<b>17</b>	Screen — loose (30x80x330)	1 piece	0434515005555
<b>18</b>	Door sealing cord 12 mm	2500 mm	0040012120005



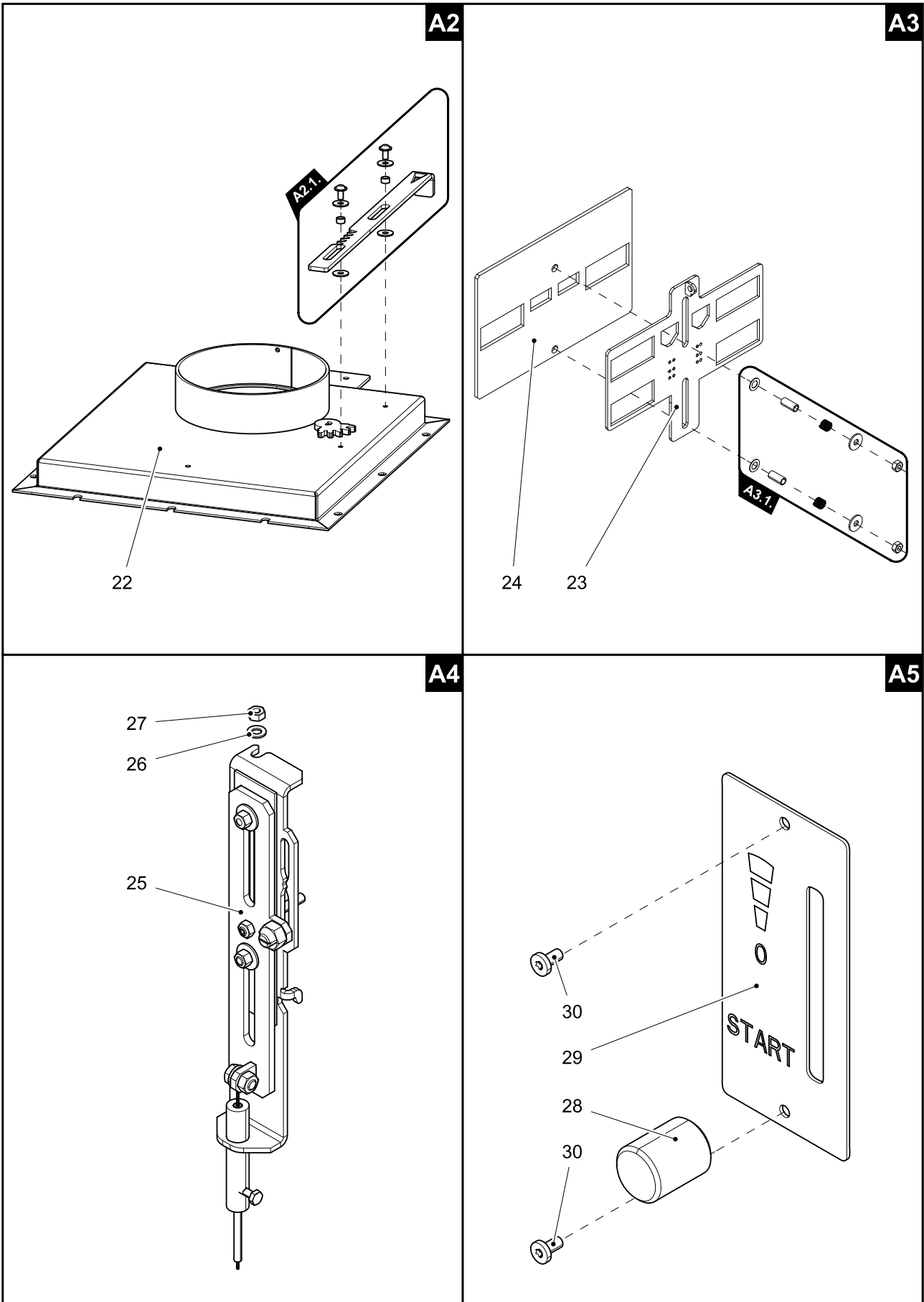
### 3.2. Detail A1



Item	Name	Quantity	Number of goods
<b>Detail A1</b>			
<b>A1.1.</b>	Fire-box door lever lock (complete) + Handle connecting material — set	1 piece	0429415007318
<b>A1.3.</b>	Closing mechanism drawbar — set	1 piece	0434615005321
<b>A1.4.</b>	Glass holder — set/black	1 piece	0434615005330
<b>A1.5.</b>	Cleaning cover — set/black	1 piece	0434515505005

<b>A1.6.</b>	Shutter/silver — set	1 piece	0434515005315
<b>19</b>	Fire-box door (welded part)/black	1 piece	0434515005200
<b>20</b>	Glass sealing cord — set (10mm, 8x2 mm)	1 piece	0435015105300
<b>21</b>	Refractory glass (345x455)	1 piece	0434515005304

### 3.3. Detail A2, A3, A4, A5



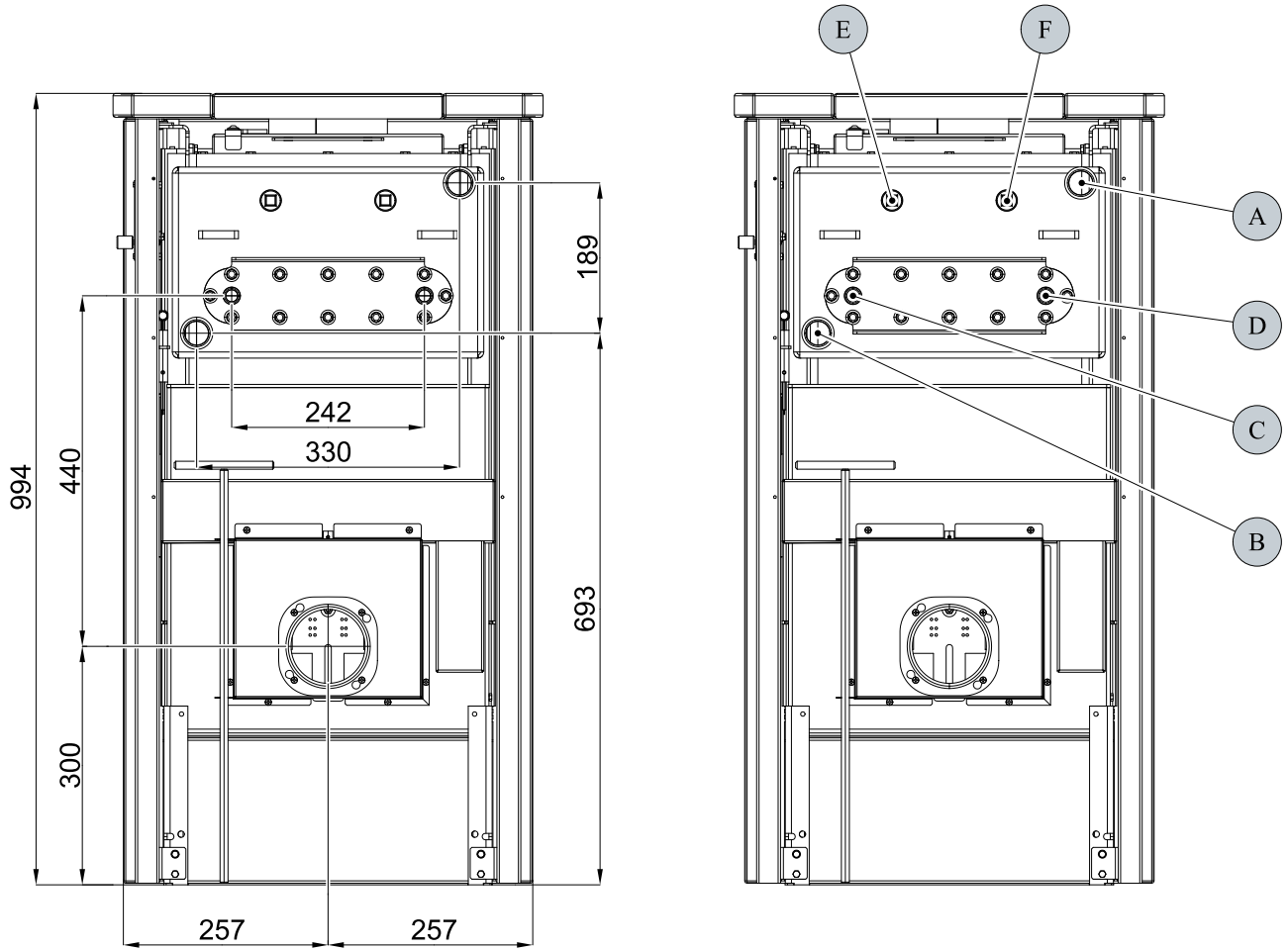
List of spare parts

GB

<b>Detail A2</b>			
<b>Item</b>	<b>Name</b>	<b>Quantity</b>	<b>Number of goods</b>
<b>A2.1.</b>	Flap drawbar/black — set	1 piece	0434515005088
<b>22</b>	Lid/black	1 piece	0434515015085
<b>Detail A3</b>			
<b>Item</b>	<b>Name</b>	<b>Quantity</b>	<b>Number of goods</b>
<b>A3.1.</b>	Sliding valve connecting material — set	1 piece	0434615005003
<b>23</b>	Sliding valve/black	1 piece	0434515005027
<b>24</b>	Sliding valve sealing	1 piece	0434515005052
<b>Detail A4</b>			
<b>Item</b>	<b>Name</b>	<b>Quantity</b>	<b>Number of goods</b>
<b>25</b>	Control/Easycontrol	1 piece	0434515005060
<b>26</b>	Washer 5.3 DIN 125A	1 piece	-
<b>27</b>	Nut M5 DIN 980V	1 piece	-
<b>Detail A5</b>			
<b>Item</b>	<b>Name</b>	<b>Quantity</b>	<b>Number of goods</b>
<b>28</b>	Controller	1 piece	0420915005625
<b>29</b>	Controller label	1 piece	0429415005171
<b>30</b>	Screw M3x10 BN 9524	2 piece	0030400300105

# 4. Dimensioned diagram

## 4.1. Connection of the exchanger



Dimensioned diagram

**GB**

Item	Name
<b>A</b>	Forward flow connection (inside thread G1")
<b>B</b>	Reverse flow connection (inside thread G1")
<b>C</b>	Intake of cooling liquid (outside thread G1/2")
<b>D</b>	Outlet of cooling liquid (outside thread G1/2")
<b>E</b>	Hole for thermostatic sensor cup (inside thread G1/2")/cooling loop
<b>F</b>	Hole for thermostatic sensor cup (inside thread G1/2")/circulation pump

# 5. Easy control

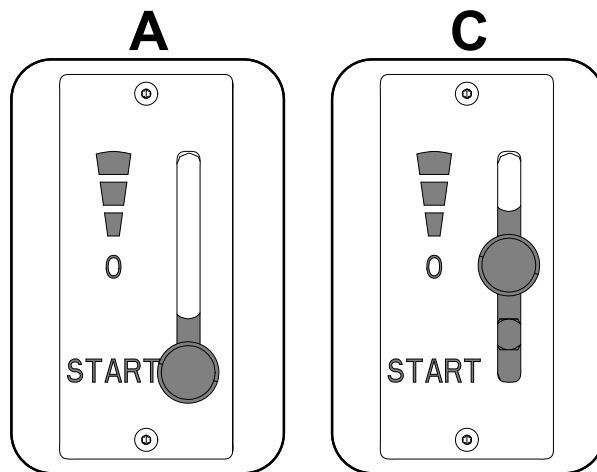
Control of all three air inputs - primary, secondary, tertiary - by means of one sole controller.

1. The controller is in the position intended for ignition (fig. A). All three air inputs are open (primary, secondary, tertiary).
2. The controller is in the position intended for burning of the stove after ignition (fig. B). Two air inputs are opened only (secondary, tertiary).
3. The controller is in the position designed to close air inputs (Fig. C). No input is open (primary, secondary, tertiary). This position is used only when the stove is out of operation, after finishing the heating process.

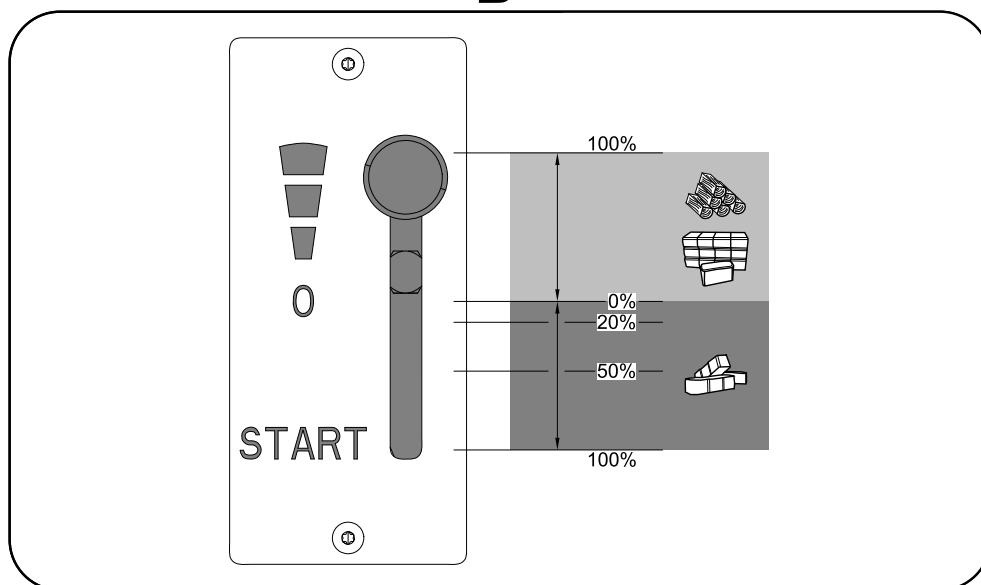


## WARNING

Air inputs may not be closed during the heating operation (Fig. C)! In an extreme case, there can occur an explosion in the stove followed by breaking of glass, blowing up of cinders across the room and breaking out of the fire.



B

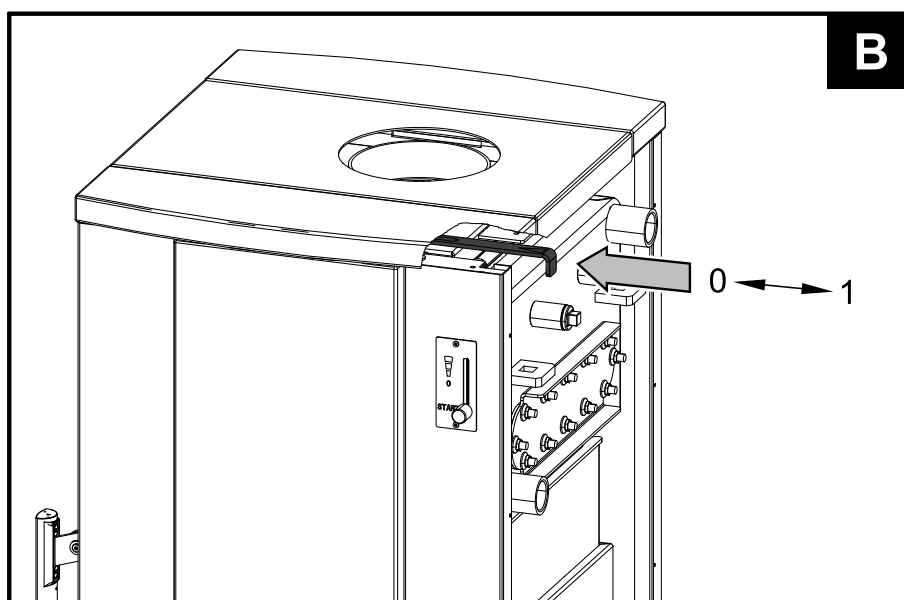
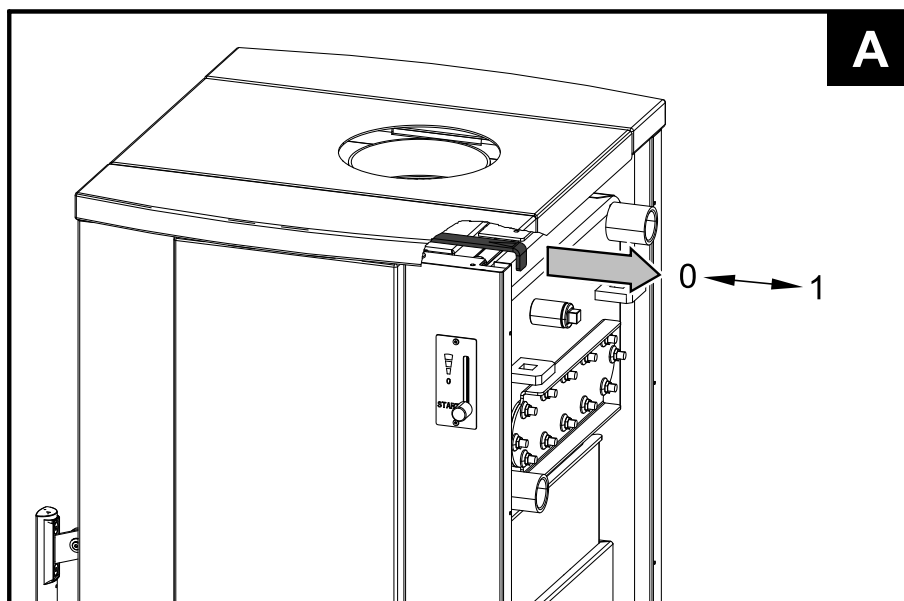


# 6. Kindling vent



## IMPORTANT

When lighting the stove or if the stove has a weak draft, push the kindling vent controller to Position 1 (Fig. A). In this position, the kindling vent is open. During the heating, pull out the kindling vent controller to Position 0 (Fig. B). In this position, the kindling vent is closed.



Kindling vent

GB

# 7. Installation of the coolant loop

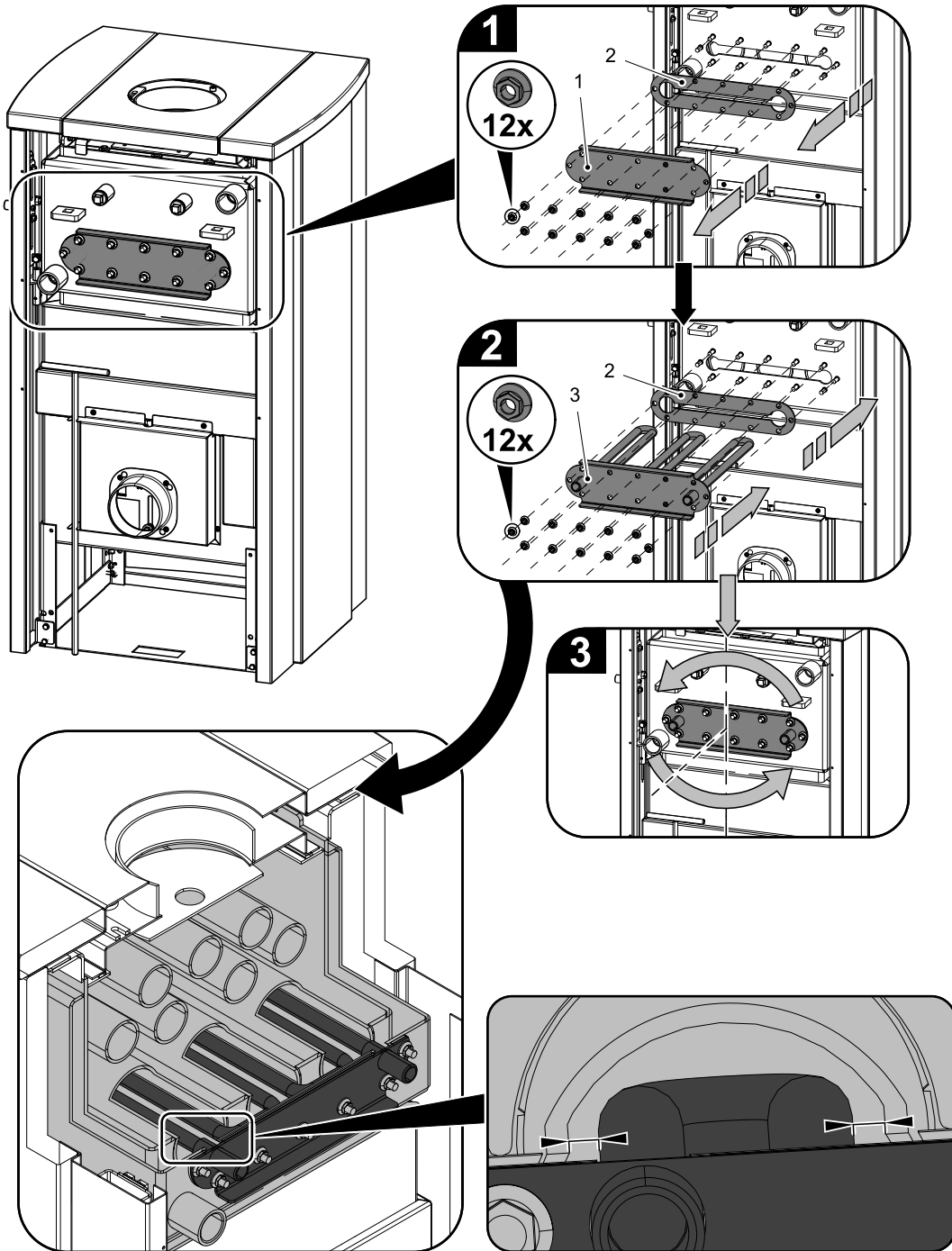


## IMPORTANT

Coolant loop not included in the scope of the delivery.

Installation of the coolant loop

GB



Item	Name	Number of goods
1	Sealing	0434515005116
2	Loop cover/black	0434515106016
3	Coolant loop	0434515006108



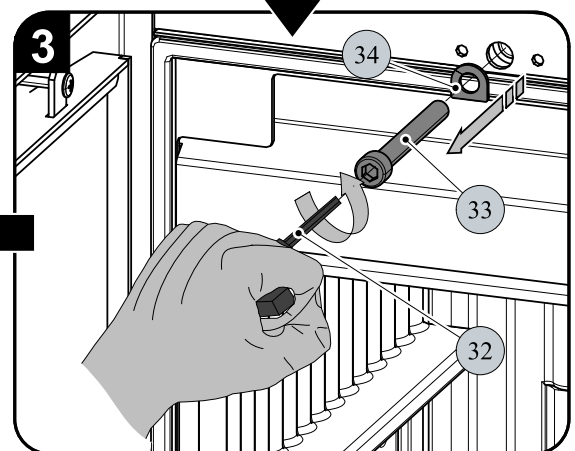
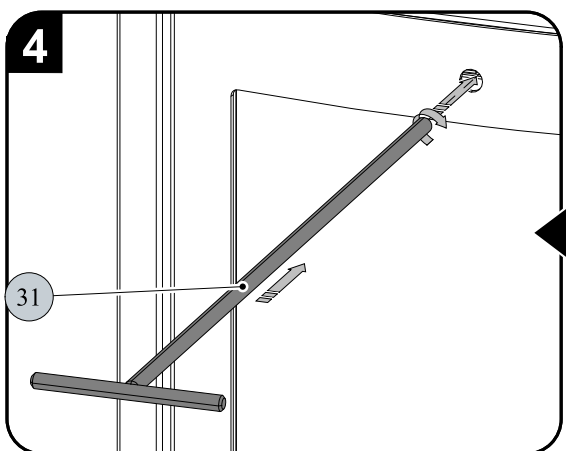
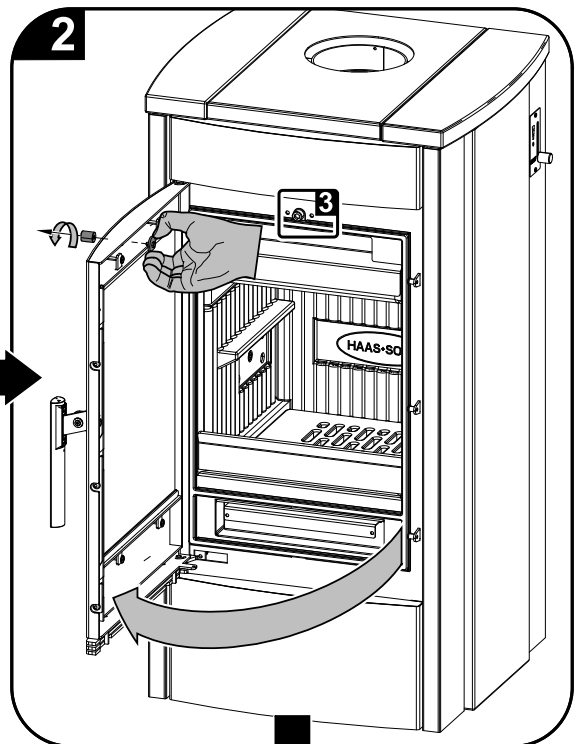
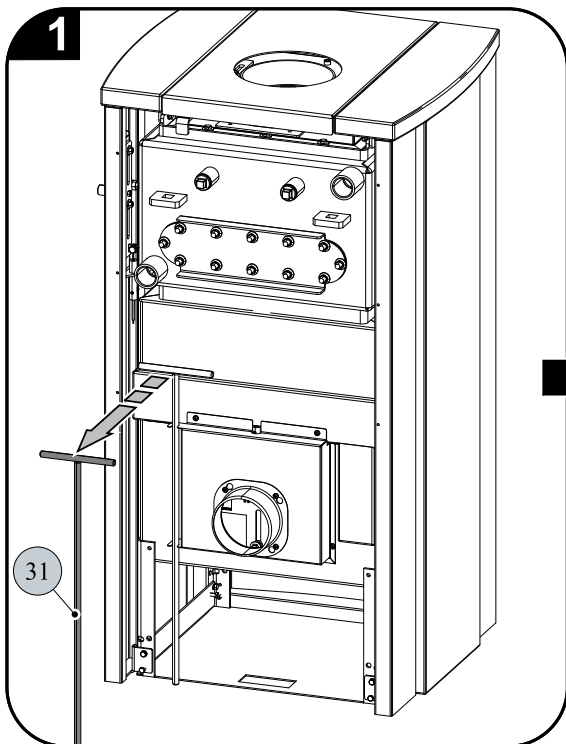
# 8. Instructions for cleaning of the exchanger



## IMPORTANT

It is recommended to perform the cleaning by wiping blade (item 35, fig. 5) 1x in a week at least, or more often, depending on the manner of operation

### 1. Preparation and mounting of the cleaning drawbar.

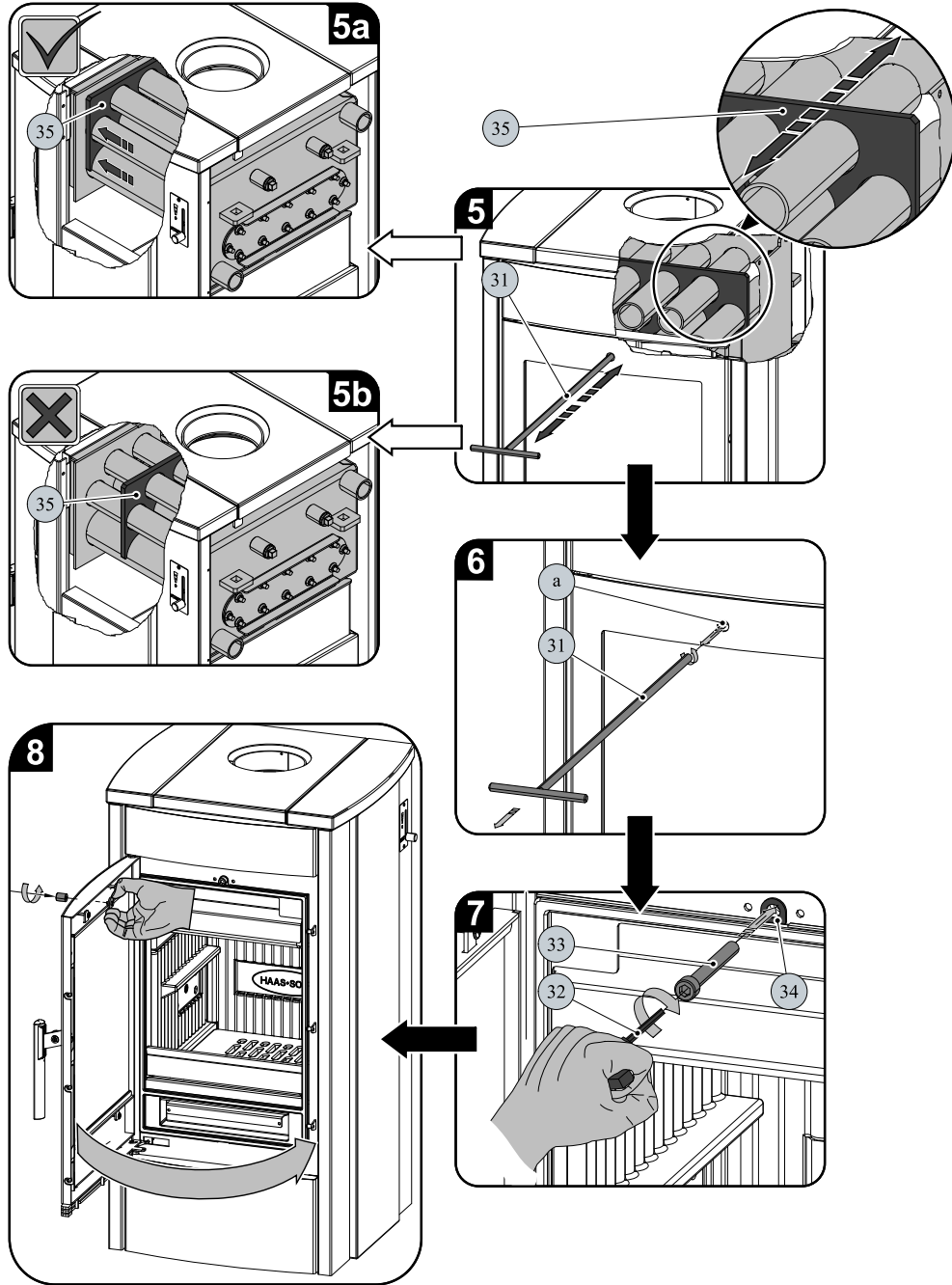


2. Proper cleaning and arrestment of the cleaning board.



**IMPORTANT**

Once the clearing is terminated, arrest the wiping blade always (fig. 5a). Do not leave the wiping blade above a flame (fig. 5b) and the orifice (a, fig. 6) passable freely.



Item	Name	Number of the spare part
31	Drawbar of the cleaning/black	0433317005063
32	Allen wrench 8mm (forms part of the delivery)	9001700080005
33	Screw M10x80 (DIN 912)	0030031000805
34	Washer/black	0434515005011
35	Wiping blade	—

